

A dark teal, rounded rectangular shape on the left side of the page, partially overlapping the text.

BOOK 2022 III NARDIINTERNI

INDEX

KIDS

Kids 01.....	pag. 06
Kids 02.....	pag. 08
Kids 03.....	pag. 10
Kids 04.....	pag. 12
Kids 05.....	pag. 14
Kids 06.....	pag. 16
Kids 07.....	pag. 18
Kids 08.....	pag. 20
Kids 09.....	pag. 22
Kids 10.....	pag. 24
Kids 11.....	pag. 26
Kids 12.....	pag. 28
Kids 13.....	pag. 30
Kids 14.....	pag. 32
Kids 15.....	pag. 34

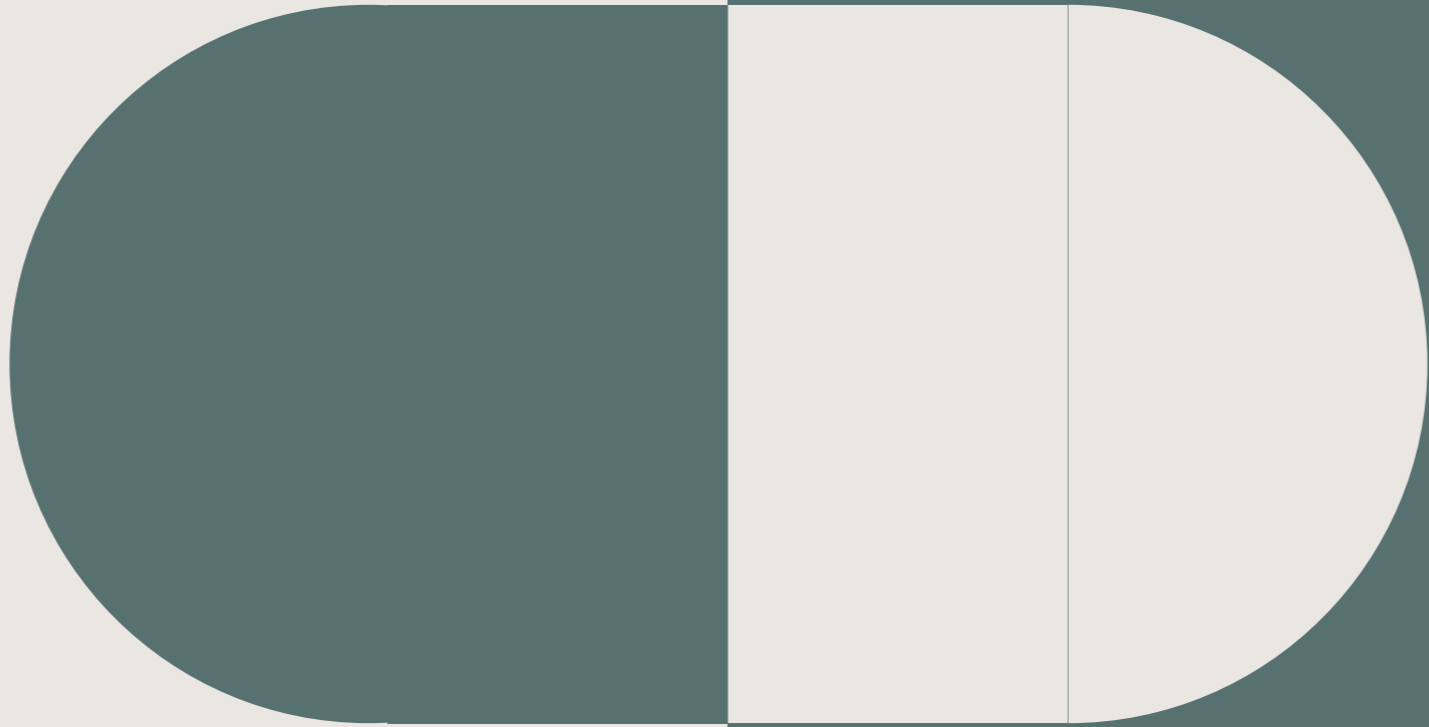
HOME

Home 01.....	pag. 38
Home 02.....	pag. 40
Home 03.....	pag. 42
Home 04.....	pag. 44
Home 05.....	pag. 46

Home 06.....	pag. 48
Home 07.....	pag. 50
Home 08.....	pag. 52
Home 09.....	pag. 54
Home 10.....	pag. 56
Home 11.....	pag. 58
Home 12.....	pag. 60
Home 13.....	pag. 62
Home 14.....	pag. 64
Home 15.....	pag. 66
Home 16.....	pag. 68
Home 17.....	pag. 70
Home 18.....	pag. 72
Home 19.....	pag. 74
Home 20.....	pag. 76
Home 21.....	pag. 78

TECHNICAL DATA

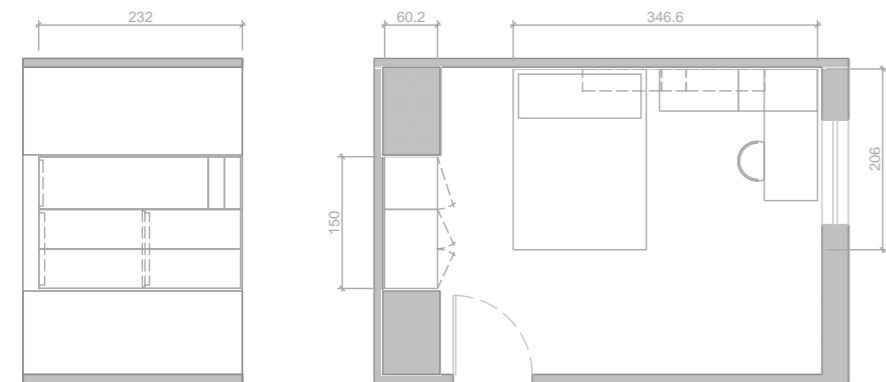
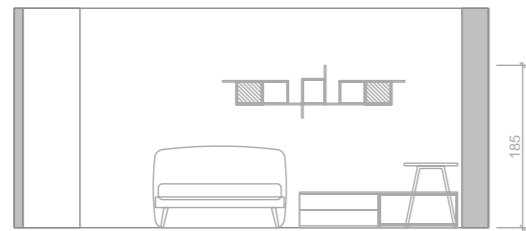
Handles.....	pag. 82
Finishes.....	pag. 84
Dimensions.....	pag. 88



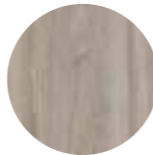
KIDS SECTION

KIDS 01

Code	Description	€
M2G08232	Letto Ranger"Be"1490 P.2055 Gir.160	726
M2E01052	Box Terra L.900 P.474 H.388 2c	405
M2E01050	Box Terra L.900 P.474 H.388	171
M2E09101	Top P.480 Sp.18 M.lin.	113,4
M2S150A3	Piano Scrit."T50" L.1500x608x30	113
M2S00430	Gamba Fado H.705 Fissa	275
M2K00782	Casel.denver L.900 H.276 Anta Sx Dx	186
M2K00780	Casel.denver L.600 H.276 Giorno Dx	116
M2K00787	Casel.denver L.900 H.276 Anta Sx Sx	186
M2B06601	Arm.a229 L. 900 P.602 H.2320	644
M2B06503	Arm.2ca+A192 L. 600 P.602 H.2320	649
TOTALE		3584



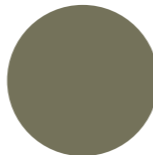
Ossidato



Beige

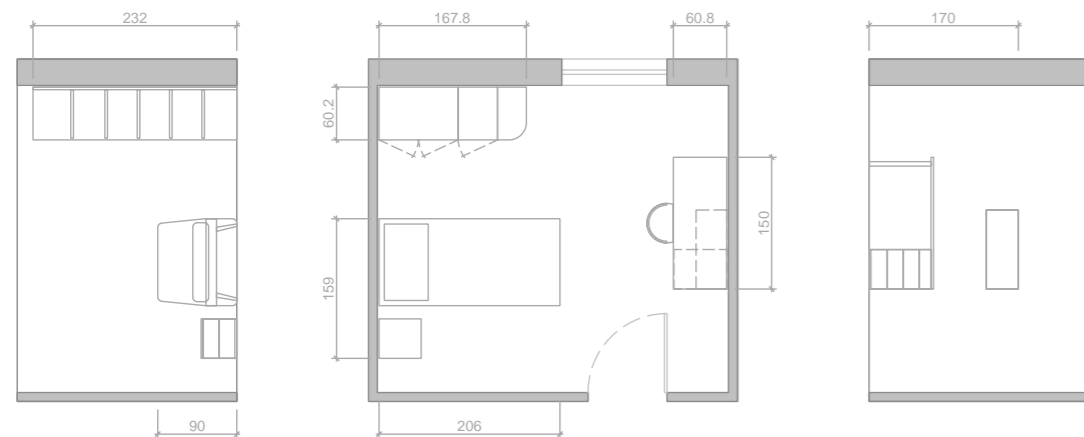
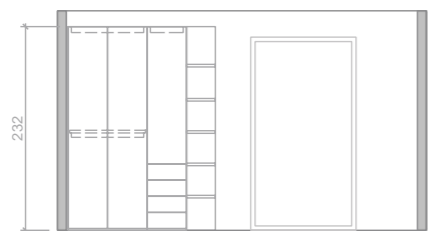


Salvia

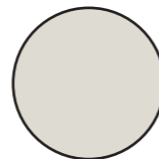


KIDS 02

Code	Description	€
M2G08312	Letto Tablet"Be" 990 P.2055 Gir.160	590
M2E07012	Comodino L.450 P.480 H.406 2c	273
M2B06601	Arm.a229 L. 900 P.602 H.2320	644
M2B06404	Arm.4ca+A156 L. 450 P.602 H.2320	788
M2B06280	Arm.terminale tondo L.328x583 H.2320 Dx	350
M2S150Q8	Scrivitoio "T50" (Q) L.1500x735x608	666
M2S150Q8	Piano Scrit."T50" 1500x608x30	0
M2S150Q8	Box Terra L.450 P.602 H.705 3c+1	0
M2S00450	Gamba Rasty H.705 Fissa	328
M2E00334	Box Pens L.900 H.368x346 A.vasistas	319
TOTALE		3958



Seta



Grigio

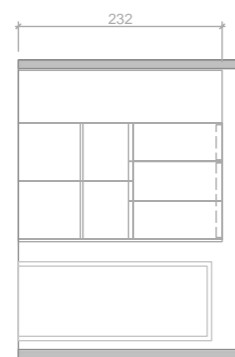
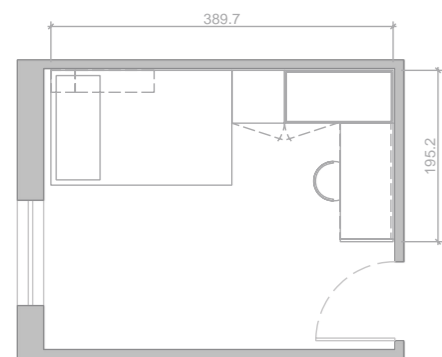
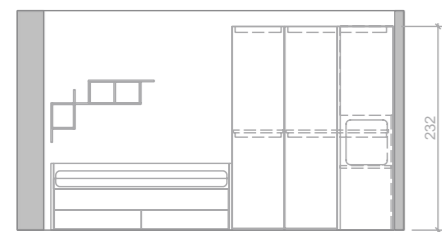
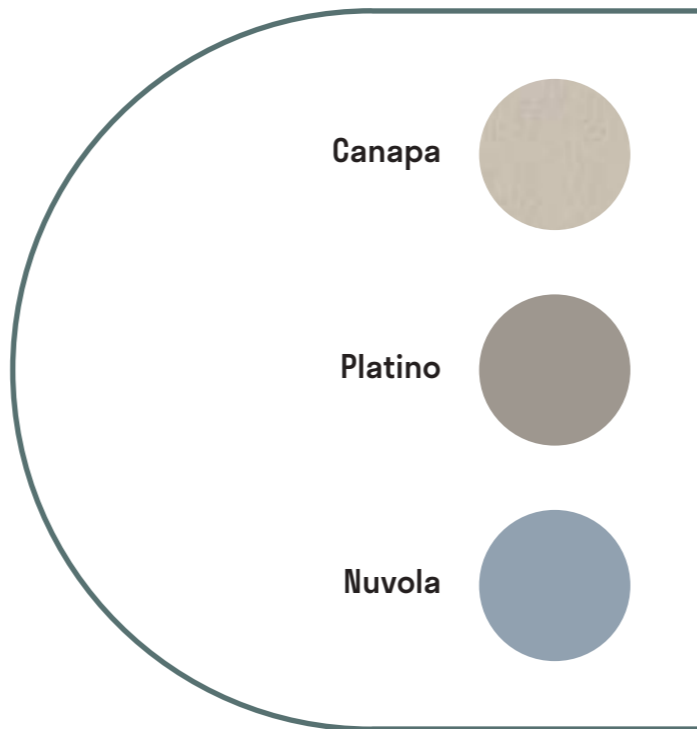


Curcuma



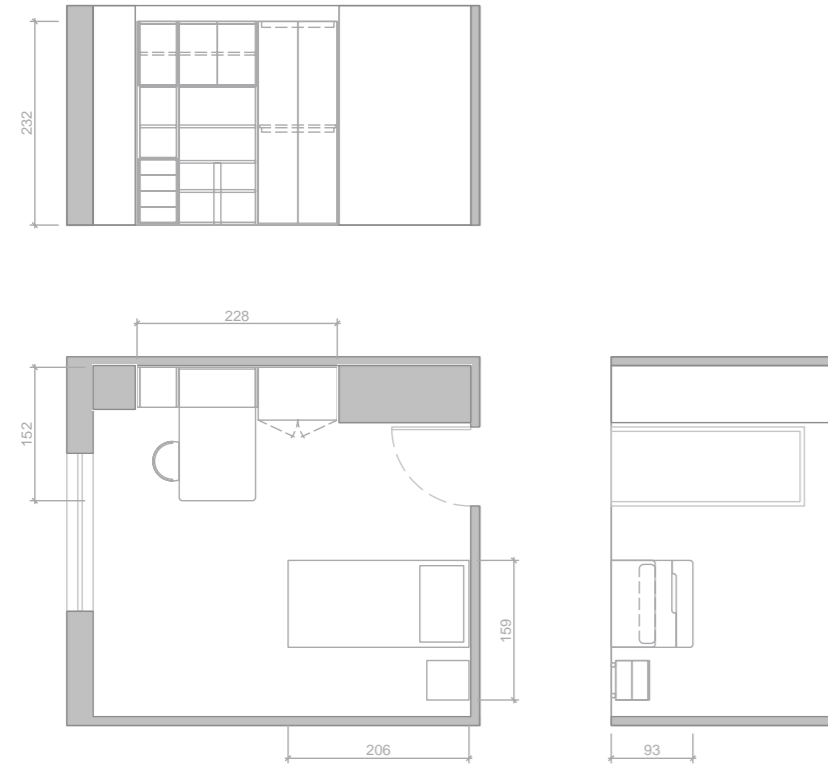
KIDS 03

Code	Description	€
M2D06470	Arm.corner Dx L.1237 P.602 H.2320	797
M2A32121	Ponte P.602 L.1320 H.2320(1012)	804
M2A30271	Fia.sos.ponte Finestra H.2320 Sp.30	208
M2B06501	Arm.a229 L. 600 P.602 H.2320	481
M2S18420	Piano S.ponte "T84" L.1320x580x30	126
M2G10361	Letto Jim 120	1736
M2K00780	Casel.denver L.600 H.276 Giorno Dx	116
M2K00786	Casel.denver L.900 H.276 Giorno Sx	156
TOTALE		4424



KIDS 04

Code	Description	€
M2G08510	Letto Mail "Be" 990 P.2055	564
M2E07017	Comod.c/Ruo. L.450 P.480 H.436 2c	387
M2C46406	Col Lib H.2320 L.450x474	851
M2C46703	Col Lib H.2320 L.900x474	731
M2C46000	Fianco Lib H.2320 P.456	122
M2B06601	Arm.a229 L. 900 P.602 H.2320	644
M2S14130	Piano Penisola "T41" L.1500x870x30	202
M2S00105	Gamba Scrittoio "Cilindrica"	196
TOTALE		3697



Rovere



Seta

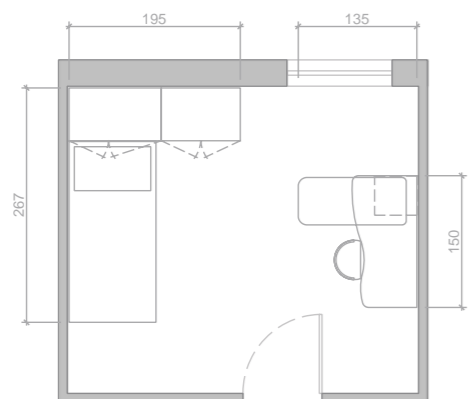
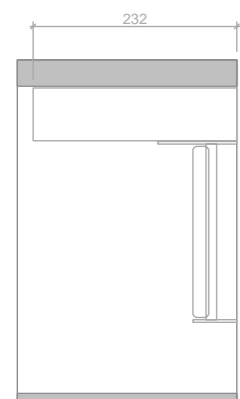
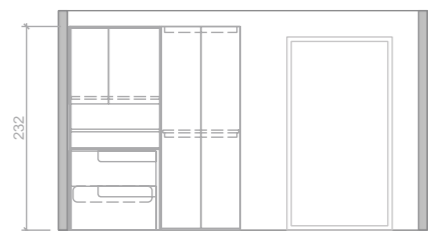



Salvia





KIDS 05

Code	Description	€
M2D06120	Arm.duplo-95 Dx P.602 L.1050 H.2320	858
M2B06601	Arm.a229 L. 900 P.602 H.2320	693
M2G08410	Letto Shake "Be" 990 P.2055	643
M2S00233	Scrit. Girevole Sx L.1500 H.735	1181
TOTALE		3375



Olmo sbiancato 

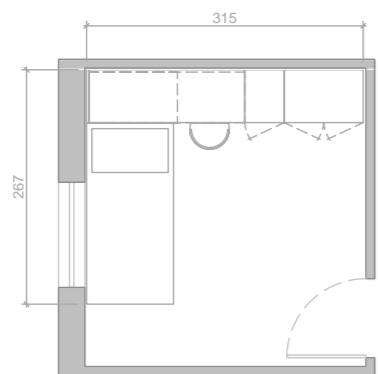
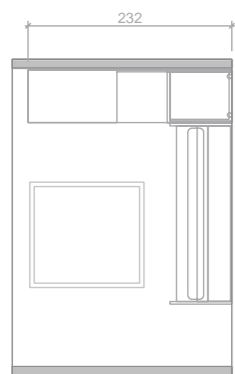
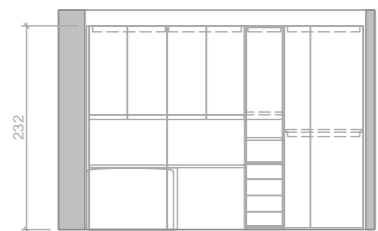
Tortora 

Pepper 



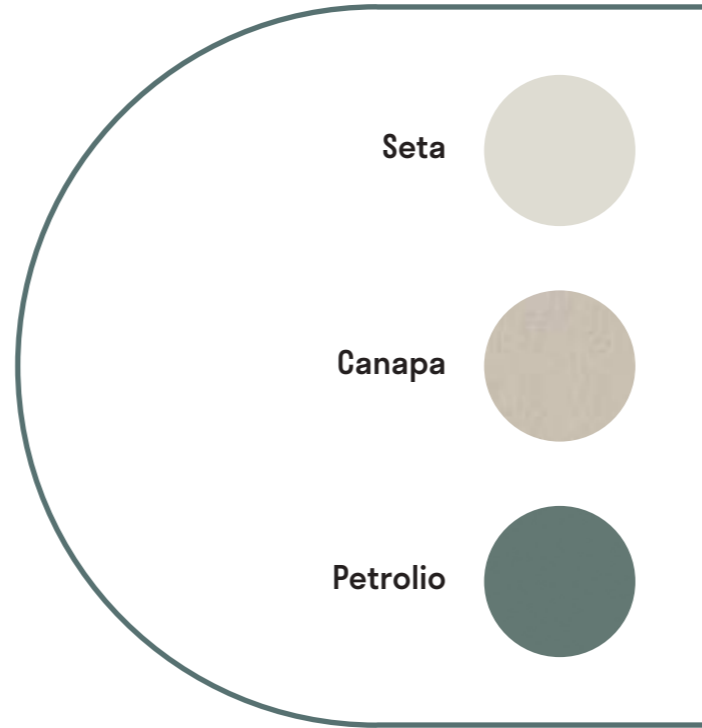
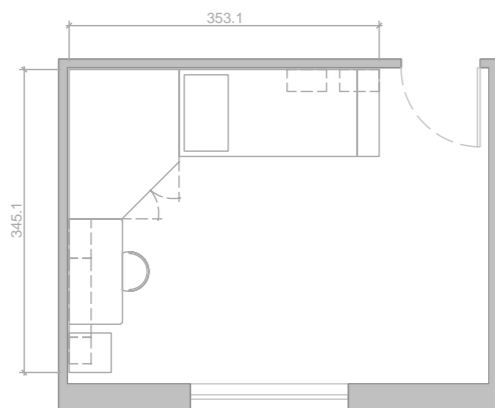
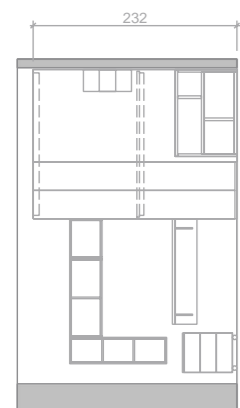
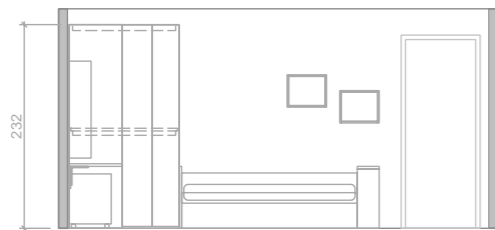
KIDS 06

Code	Description	€
M2A32141	Ponte P.602 L.1770 H.2320(1012)	974
M2A30220	Fia.sost.ponte H.2320 Sp.30	157
M2D06211	Arm.open-2 Sx L. 450 P.602 H.2320	870
M2B06615	Arm.a30+A60 L. 900 P.602 H.2320	641
M2S18450	Piano S.ponte "T84" L.1770x580x30	151
M2G04672	Div.paf "Be" L.2060 P.982 20I	840
TOTALE		4005



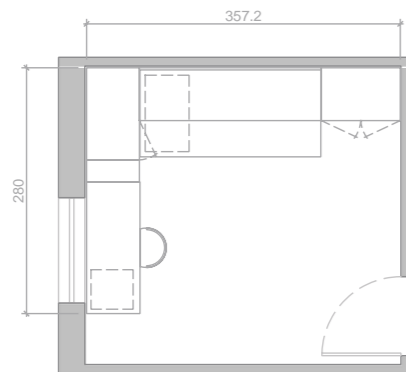
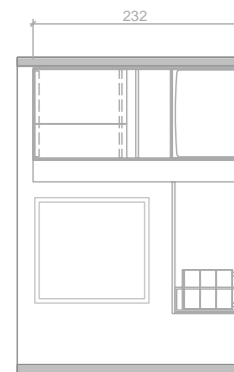
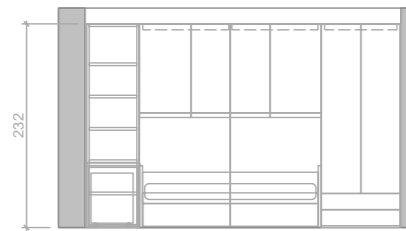
KIDS 07

Code	Description	€
M2B06140	Cab.ang.1701x1251 105-60 H.2320 C/B	1594
M2G04776	Div.exp "Be" Sx L.2310 P.982	656
M2S00542	Scrit. Reclinabile L.1200 P.598	262
M2K01502	Casellario Qubo L.450 H.368x250	119
M2K01503	Casellario Qubo L.900 H.368x250	156
M2K01504	Casellario Qubo L.300 H.1104x250	184
M2E07066	Comod.c/Ruo. L.450 P.480 H.620 3c	483
M2K01502	Casellario Qubo L.450 H.368x250	119
M2K01502	Casellario Qubo L.450 H.368x250	119
TOTALE		3692

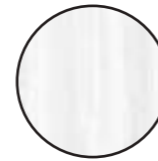


KIDS 08

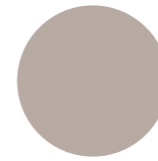
Code	Description	€
M2A32151	Ponte P.602 L.2070 H.2320(1012)	1136
M2B06603	Arm.2ca+A192 L. 900 P.602 H.2320	943
M2G04672	Div.paf "Be" L.2060 P.982 20I	840
M2D06112	Arm.duplo-76 Dx P.602 L.1050 H.2320	847
M2B06289	Arm.term.libr. L.604 P.250 H.2320	501
M2S150A3	Piano Scrit."T50" L.1500x608x30	113
M2S00257	Gamba Scrittoio "Kios" Sx	222
M2E07066	Comod.c/Ruo. L.450 P.480 H.620 3c	561
TOTALE		5163



Olmo Sbiancato



Tortora

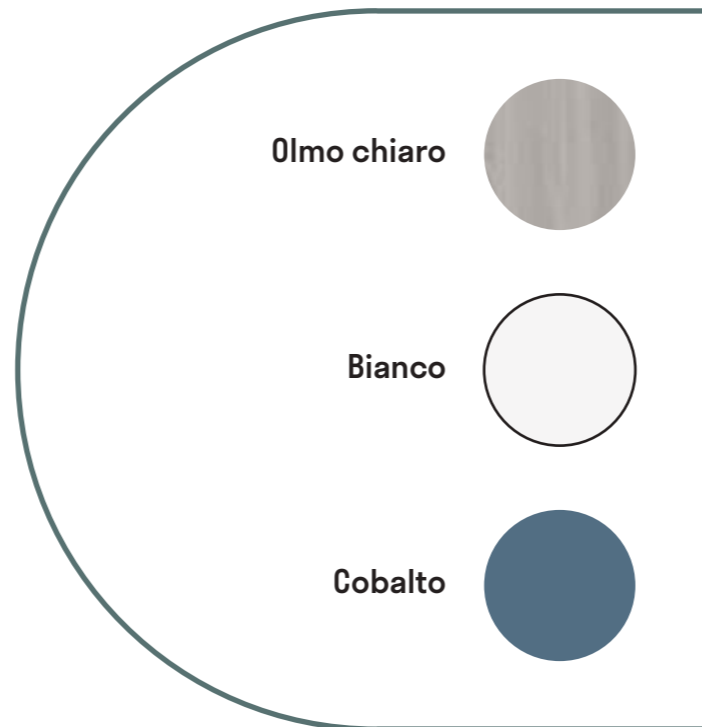
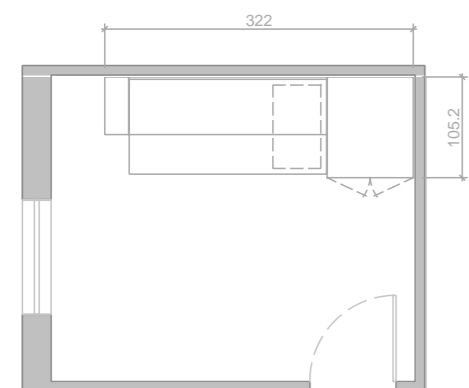
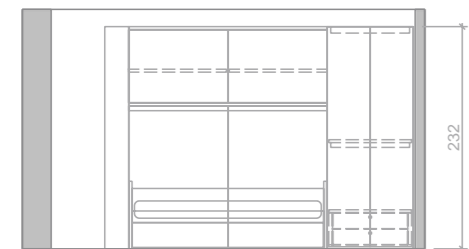


Petrolio



KIDS 09

Code	Description	€
M2D06420	Arm.mega 45+45 L. 900 P.1052 H.2320	880
M2A36051	Ponte Scorrev. L.2070 H.2320(828)	1277
M2A30226	Lib.sostegno Ponte H.2320 (828)	579
M2G04672	Div.paf "Be" L.2060 P.982 20I	840
M2M02086	Cassettiera Interna L.864 C/Top	343
TOTALE		3919



KIDS 10

Code	Description	€
M2H00632	LETTO AROUND P1048 H.1705x2120 c	1764
M2H00006	SCALETTA METALLO SOSP."BRUXELLES"	393
M2A16151	ARM.SCO.LISCIA P.659 L.1518 H.2320	1888
M2S150B3	SCRITTOIO "T50" (B) L.1500x735x608	355
M2K00910	CASELLARIO "GREGG" L.450 H.368 a DX	140
M2K00904	CASELLARIO "GREGG" L.900 H.368 g DX	122
M2E07066	COMOD.c/ruo. L.450 P.480 H.620 3c	537
M2K00910	CASELLARIO "GREGG" L.450 H.368 a DX	140
M2H00032	PROTEZ."ONE" L.1500x390x30 xLon	130
M2M02083	CASSETTIERA INTERNA L.714 C/Top	320

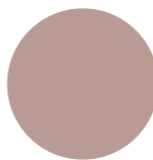
TOTALE 5789



Tortora



Dalia

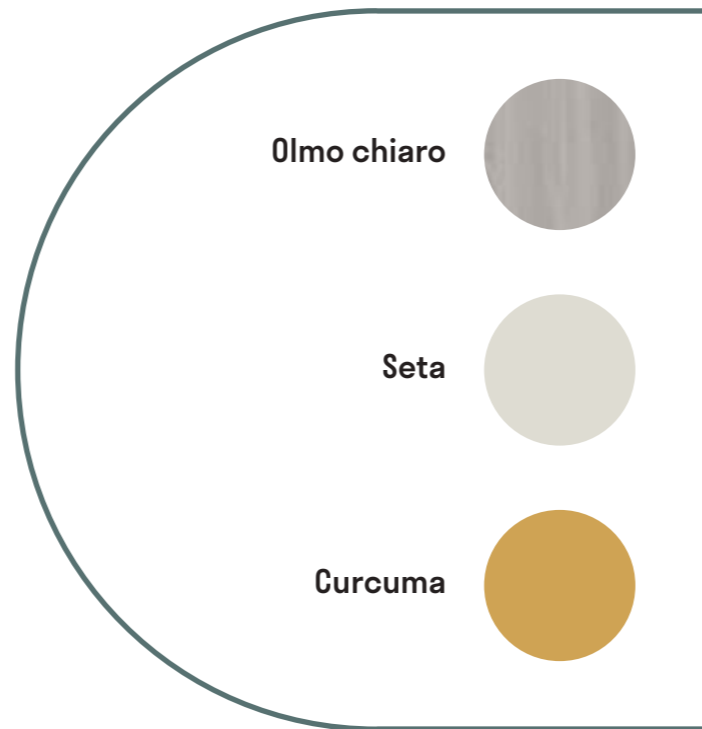
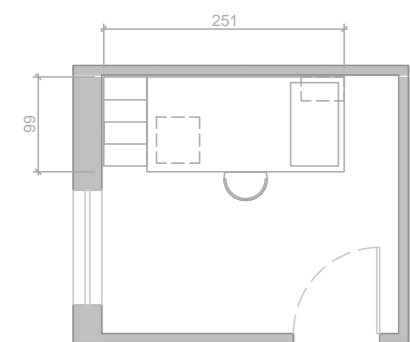
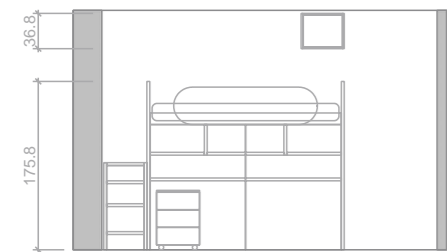


Confetto



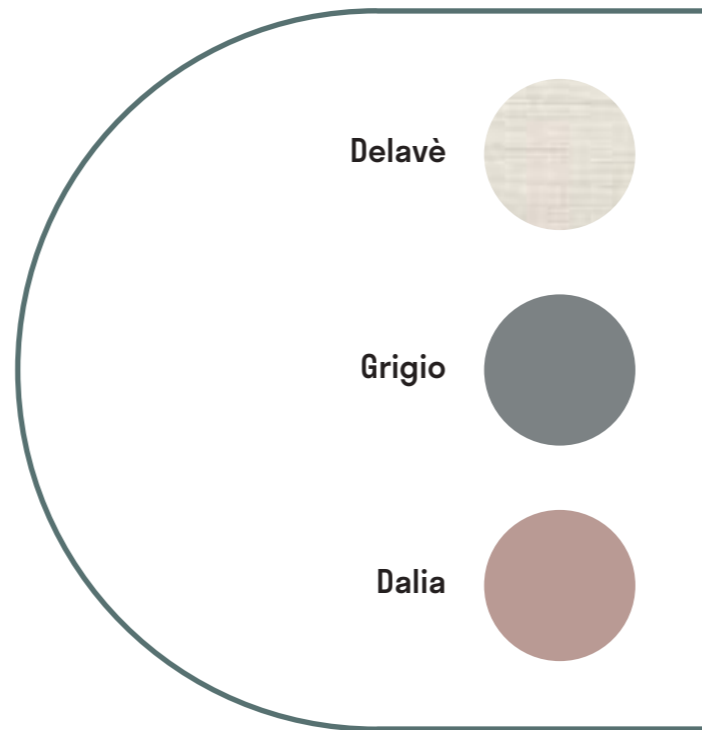
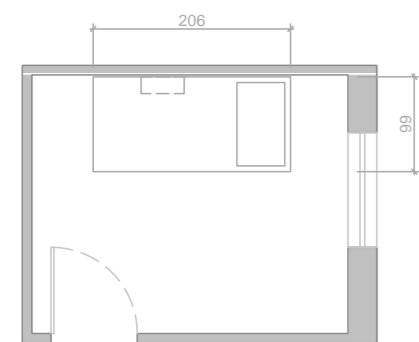
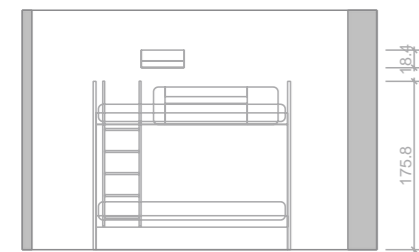
KIDS 11

Code	Description	€
M2H00020	Scaletta Laterale Smart	503
M2E07066	Comod.c/Ruo. L.450 P.480 H.620 3c	483
M2K01502	Casellario Qubo L.450 H.368x250	119
M2H00812	Letto Castel.p.990 L.2060 H.1758	1346
M2H00052	Protez."Ellisse" L.1500x390x30 Xlon	194
TOTALE		2645



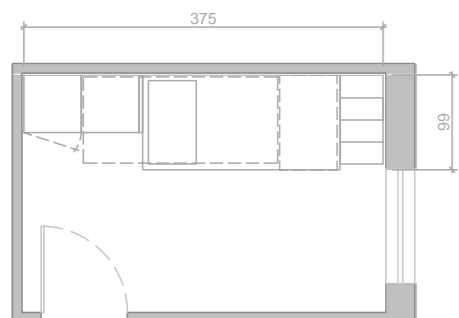
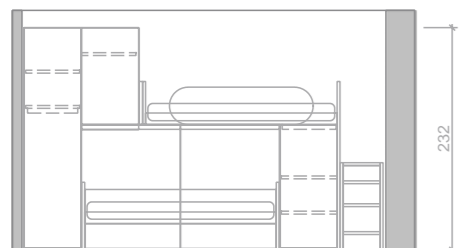
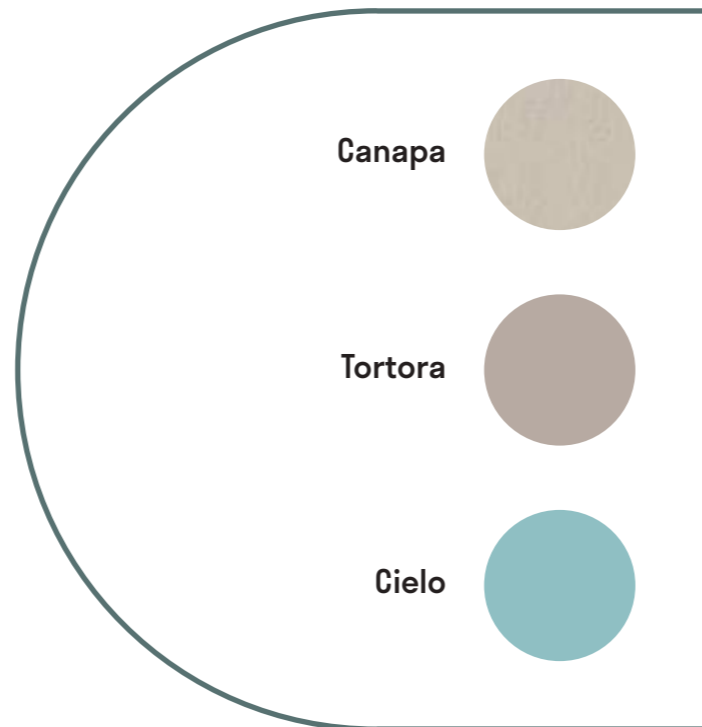
KIDS 12

Code	Description	€
M2H00801	Letto Castel.p.990 L.2060 H.1758	1342
M2H00006	Scaletta Metallo Sosp."Bruxelles"	393
M2K00766	Casellario Vega L.450 H.184	237
M2H00071	Protez."Bold-2" L.1300x390x30 Xlon	288
TOTALE		2260



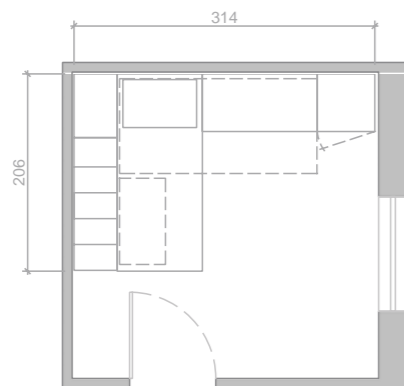
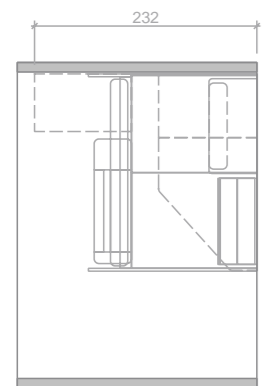
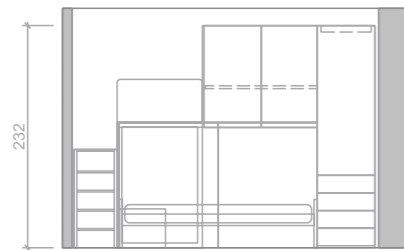
KIDS 13

Code	Description	€
M2H01006	Cast-Ponte P.990 L.2696 H.2320 Dx	1842
M2H00020	Scaletta Laterale Smart	503
M2B06501	Arm.a229 L. 600 P.602 H.2320	481
M2G04672	Div.paf "Be" L.2060 P.982 20I	840
M2H00053	Protez."Ellisse" L.1740x390x30 Xlon	203
TOTALE		3869



KIDS 14

Code	Description	€
M2H06205	CAST-PONTE P.2060 L.2090 H.2320 Sx	1843
M2B06504	ARM.4ca+a156 L. 600 P.602 H.2320	825
M2H00013	SALITA POSTERIORE	1071
M2E07032	COMOD. L.900 P.480 H.406 2c	371
M2G08710	TURCA PAF "Be" 990 P.2055 Fissa	439
M2H00071	PROTEZ."BOLD-2" L.1300x390x30 xLon	288
TOTALE		4837



Rovere

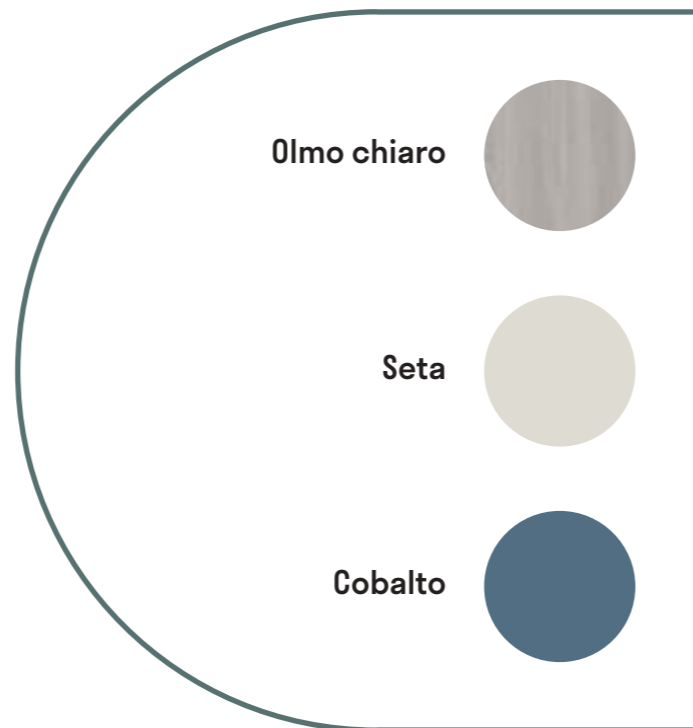
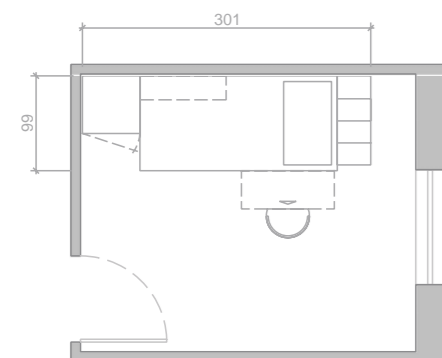
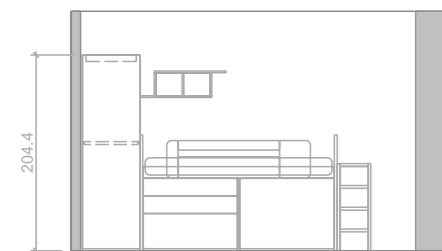


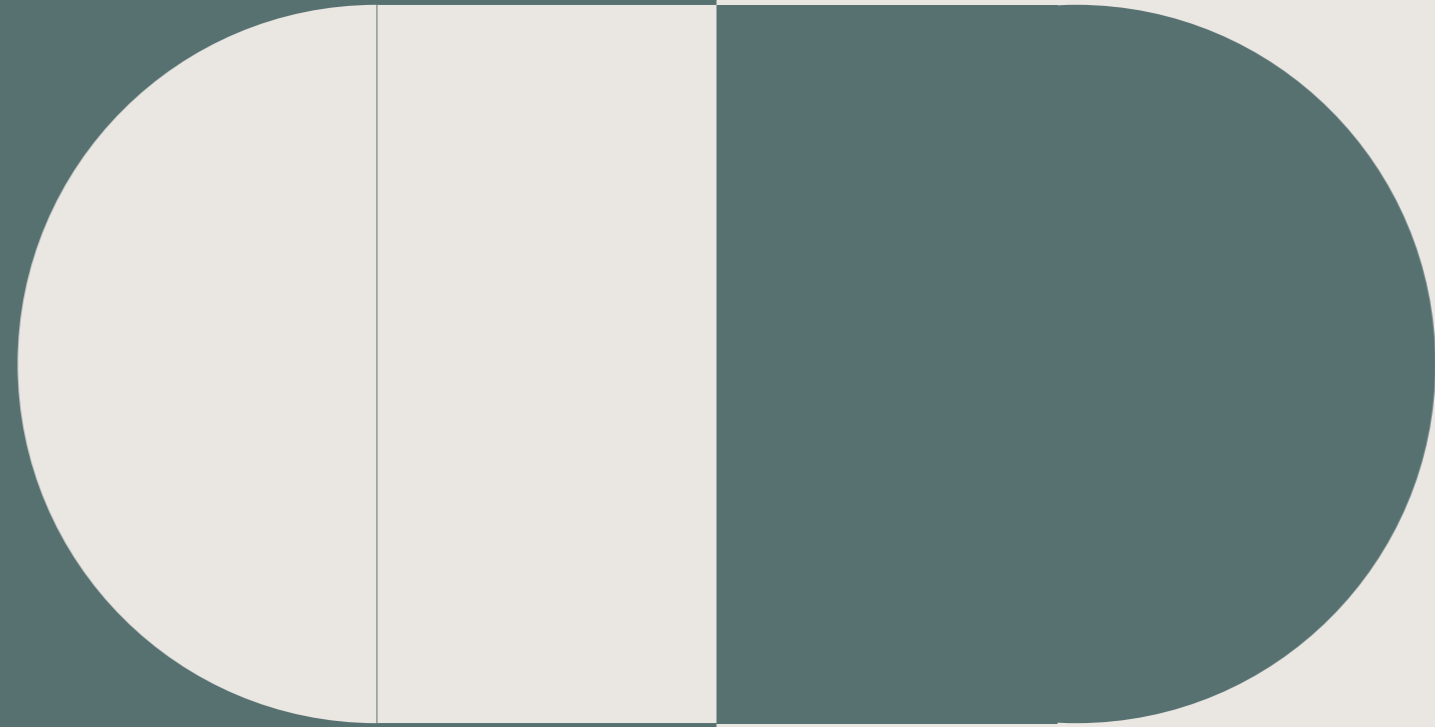
Beige



KIDS 15

Code	Description	€
M2B05521	Arm.a202 L. 600 P.602 H.2044	475
M2G10272	Letto Soho L.206 H.121 P.99 Dx	1349
M2H00016	Scaletta Slim	334
M2K00788	Casel.denver L.900 H.276 Anta Dx Sx	186
M2H00072	Protez."Bold-2" L.1500x390x30 Xlon	301
TOTALE		2645

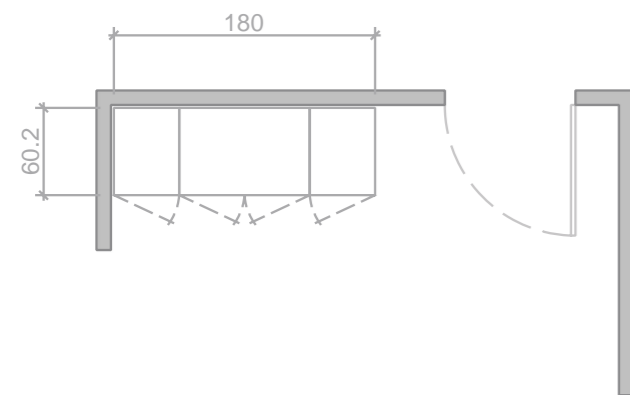
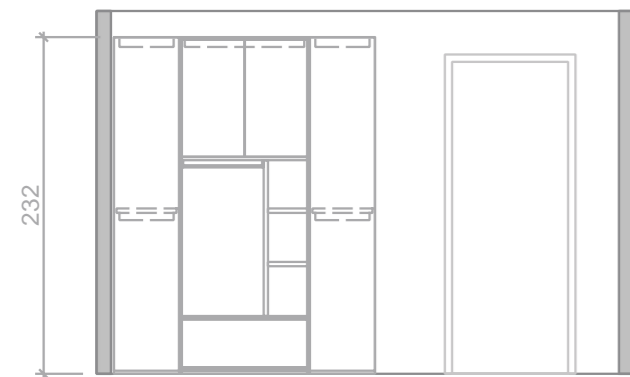




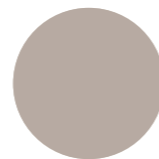
HOME SECTION

HOME 01

Code	Description	€
M2B06401	Arm.a229 L. 450 P.602 H.2320	494
M2D06637	Arm.giorno L. 900 P.602 H.2320	915
M2B06401	Arm.a229 L. 450 P.602 H.2320	494
TOTALE		1903



Tortora

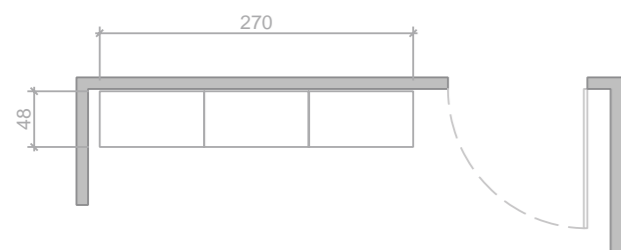
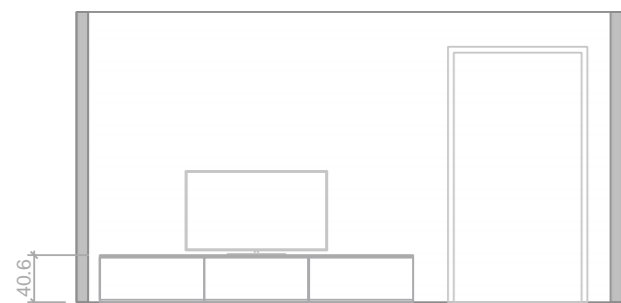


Canapa



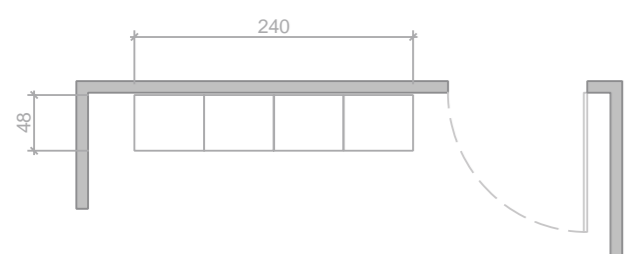
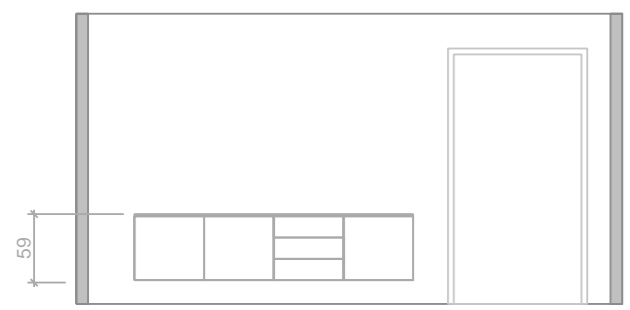
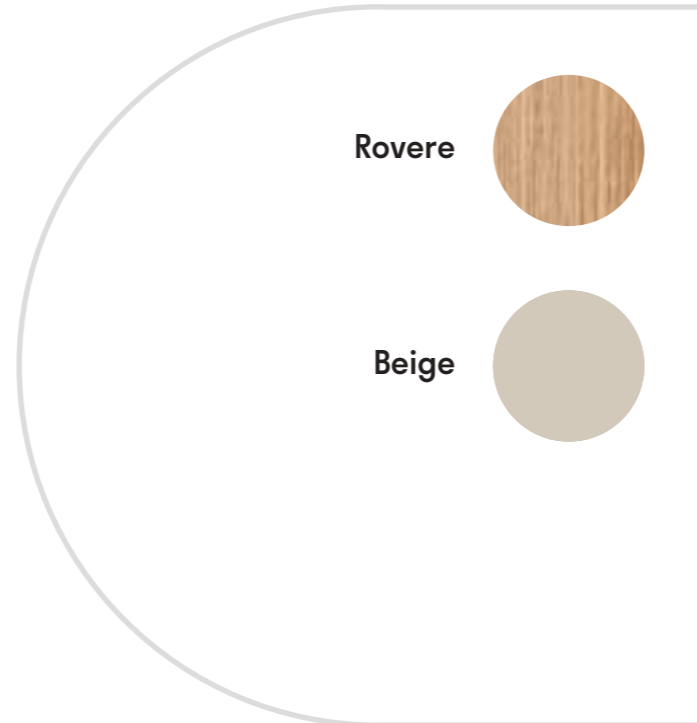
HOME 02

Code	Description	€
M2E01053	Box Terra L.900 P.474 H.388 1c	308
M2E01055	Box Terra L.900 P.474 H.388 Arib	331
M2E01053	Box Terra L.900 P.474 H.388 1c	308
M2E09101	Top P.480 Sp.18 M.lin.	170,1
TOTALE		1117



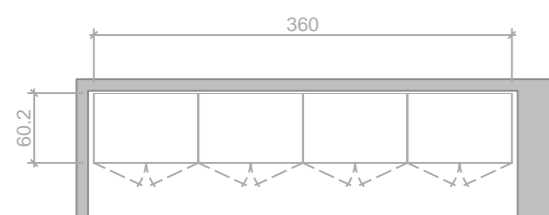
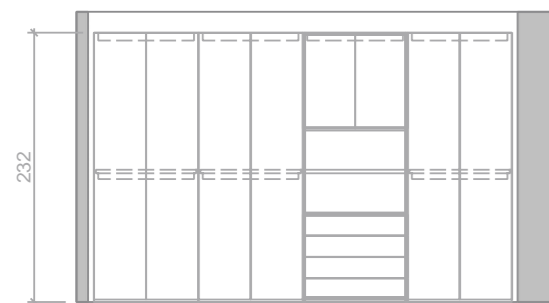
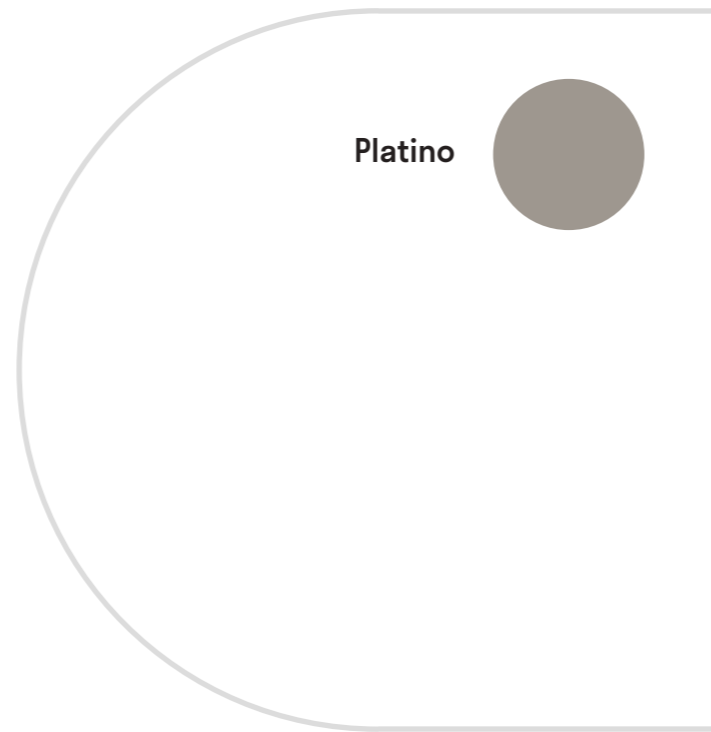
HOME 03

Code	Description	€
M2E00173	Box Pens L.600 H.552x474 A.batt.	285
M2E00171	Box Pens L.600 H.552x474 Cassetti	508
M2E00173	Box Pens L.600 H.552x474 A.batt.	285
M2E00173	Box Pens L.600 H.552x474 A.batt.	285
M2E09101	Top P.480 Sp.18 M.lin.	151,2
TOTALE		1514



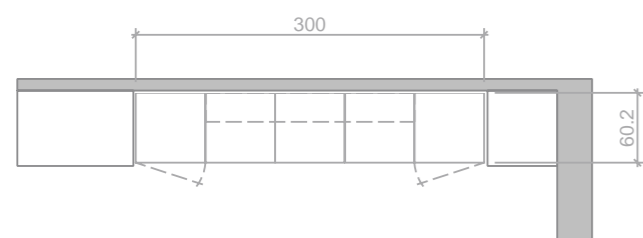
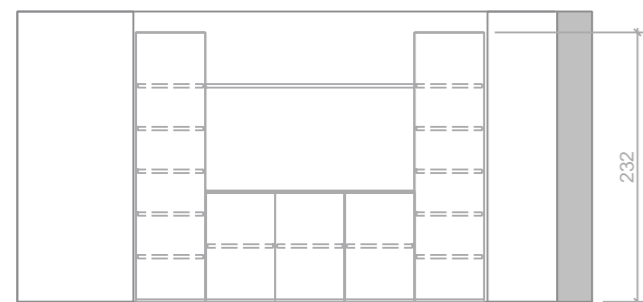
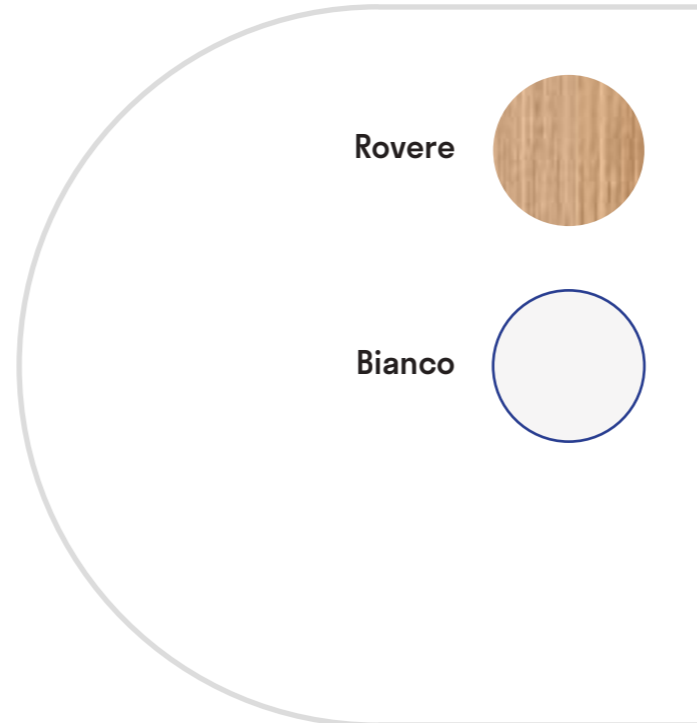
HOME 04

Code	Description	€
M2B06601	Arm.a229 L. 900 P.602 H.2320	644
M2B06601	Arm.a229 L. 900 P.602 H.2320	644
M2B06611	Arm.4ca+A82 L. 900 P.602 H.2320	1110
M2B06601	Arm.a229 L. 900 P.602 H.2320	644
TOTALE		3042



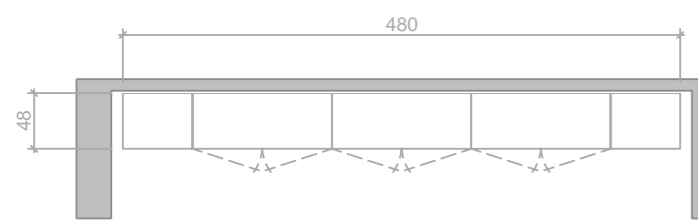
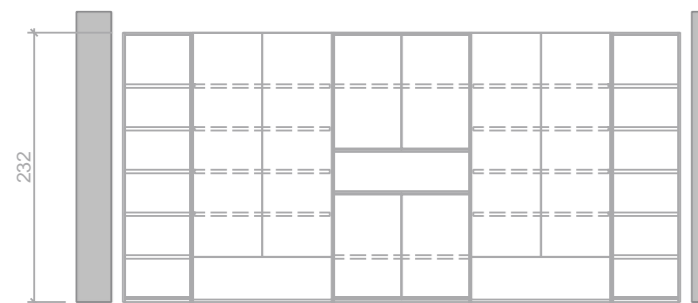
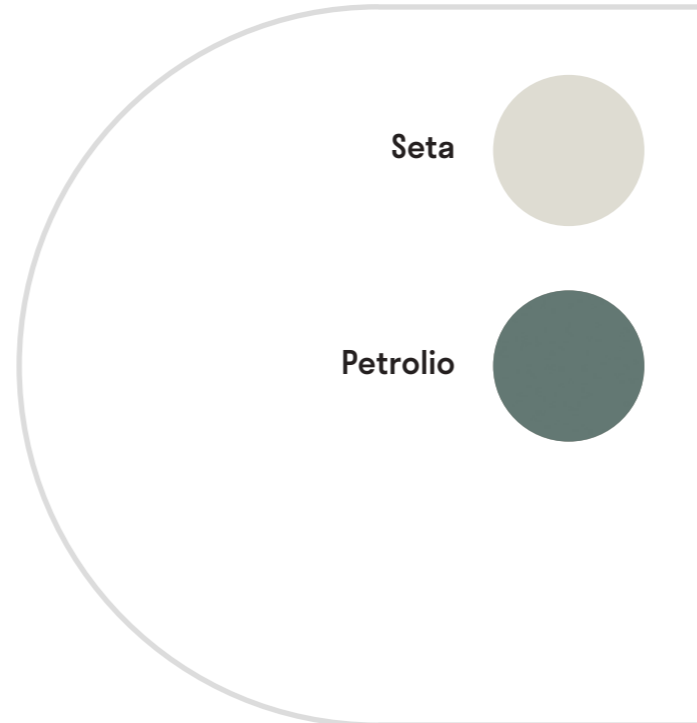
HOME 05

Code	Description	€
M2B06501	Arm.a229 L. 600 P.602 H.2320	481
M2E02271	Box Terra L.600 P.602 H.940 A92	337
M2E02271	Box Terra L.600 P.602 H.940 A92	337
M2E02271	Box Terra L.600 P.602 H.940 A92	337
M2B06501	Arm.a229 L. 600 P.602 H.2320	481
M2E09201	Top P.608 Sp.18 M.lin.	126
M2K00219	Mensola Sp.30 L.1800x250 C/3 Fori	151
TOTALE		2250



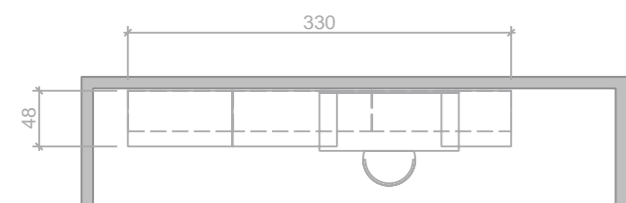
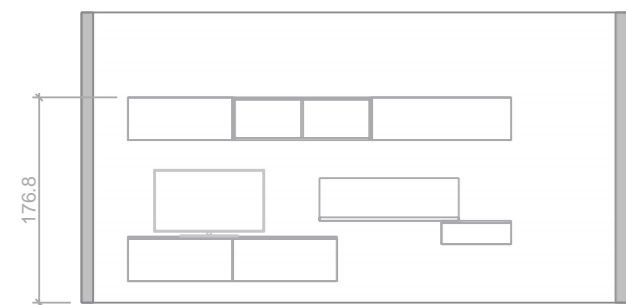
HOME 06

Code	Description	€
M2C36501	Col Lib H.2320 L.600x346	475
M2C36000	Fianco Lib H.2320 P.328	101
M2C46804	Col. Lib. H.2320 L.1200x474	1155
M2C46801	Col. Lib. H.2320 L.1200x474	991
M2C46804	Col. Lib. H.2320 L.1200x474	1155
M2C46000	Fanco Lib H.2320 P.456	122
M2C36501	Col Lib H.2320 L.600x346	475
M2C36000	Fianco Lib H.2320 P.328	101
TOTALE		4575



HOME 07

Code	Description	€
M2E00335	Box Pens L.900 H.368x346 A.ribalta	319
M2E00335	Box Pens L.900 H.368x346 A.ribalta	319
M2E09101	Top P.480 Sp.18 M.lin.	113,4
M2S00521	Scrit. Pensile Base L.1200 P.518	218
M2E00104	Box Pens L.600 H.184x474 Cassetto	272
M2E09101	Top P.480 Sp.18 M.lin.	37,8
M2E00334	Box Pens L.900 H.368x346 A.vasis	319
M2E00350	Box Pens L.1200 H.368x346 Giorno	222
M2E00354	Box Pens L.1200 H.368x346 A.vasistas	368
TOTALE		2218



Rovere

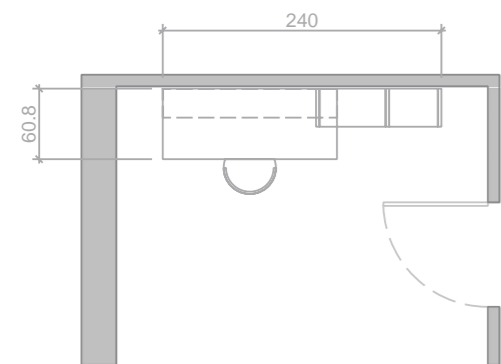


Canapa



HOME 08

Code	Description	€
M2S150A3	Piano Scrit."T50" L.1500x608x30	113
M2S00143	Gamba "L" Sx L.360 H.705 P.606	121
M2K00215	Mensola Sp.30 L.1500x250 C/2 Fori	125
M2K00215	Mensola Sp.30 L.1500x250 C/2 Fori	125
M2S00315	Col Lib Sotto Scr H.705 L.600x346	434
M2S00303	Col Lib Sotto Scr H.705 L.450x346	249
M2S00300	Fianco Lib H.705 P.328	58
M2X02301	Pannello Sp.30 Bordato (Str)	97,5
TOTALE		1322



Olmo chiaro

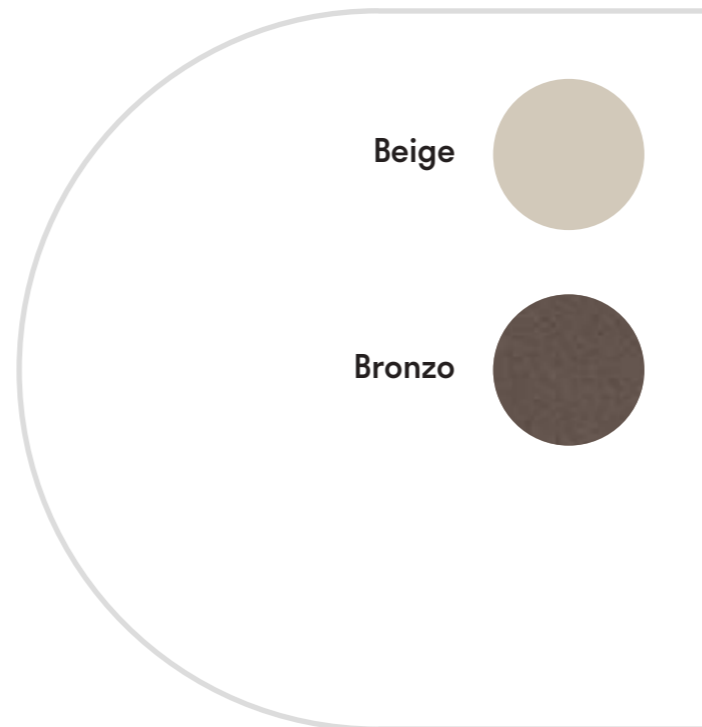
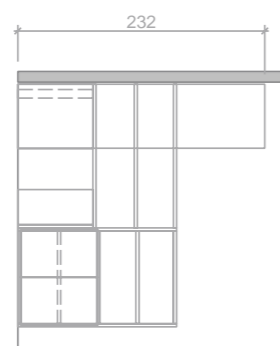
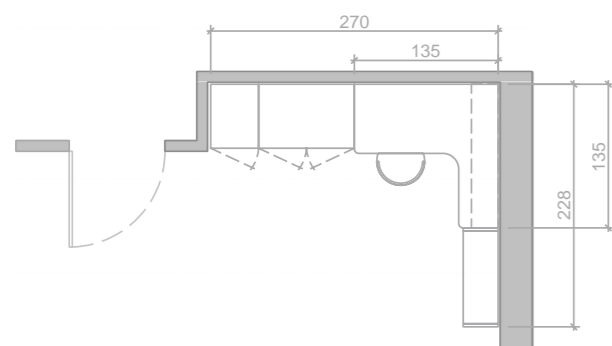
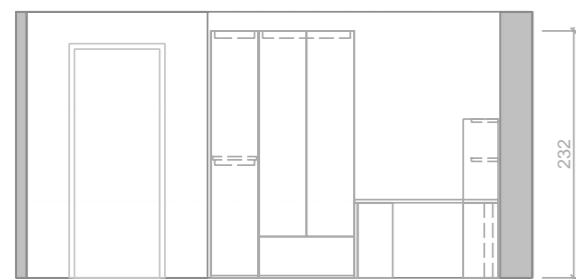


Platino



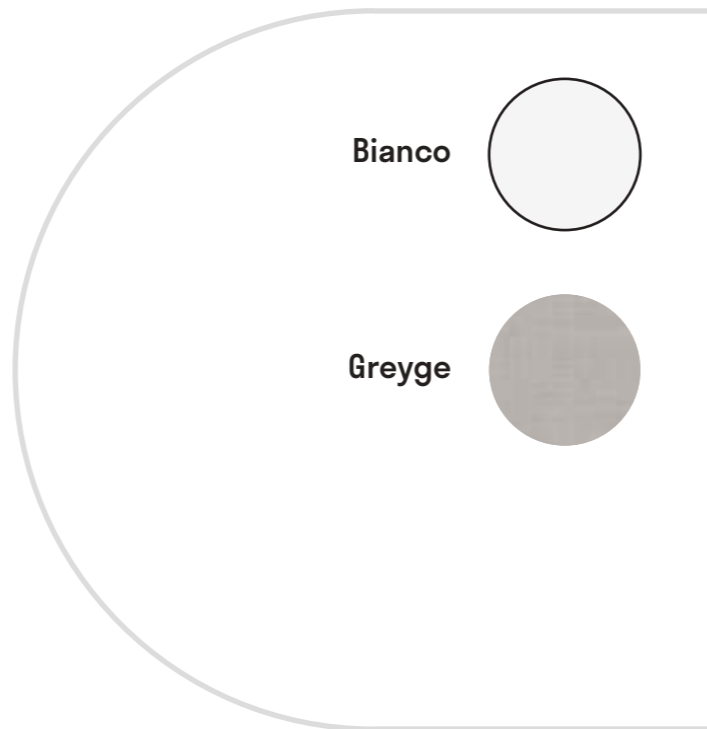
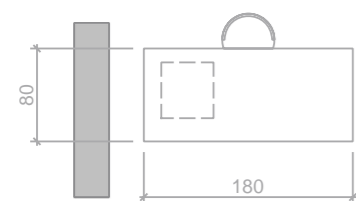
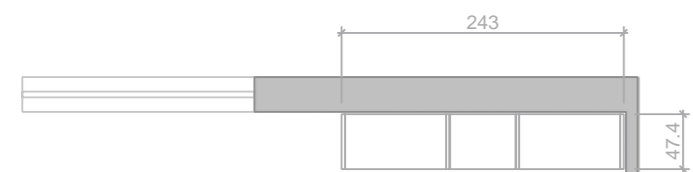
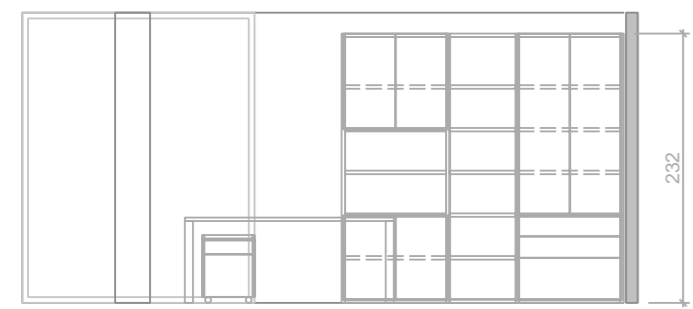
HOME 09

Code	Description	€
M2B06401	Arm.a229 L. 450 P.602 H.2320	445
M2B06603	Arm.2ca+A192 L. 900 P.602 H.2320	738
M2S169A2	Piano Scrit."T69" L.1350x1350x30	204
M2S00151	Gamba "L" Dx L.360 H.705 P.330	105
M2S00123	Gamba Basic H.705 P.606 Fissa	135
M2S00105	Gamba Scrittoio "Cilindrica"	196
M2C34703	Col Lib H.1492 L.900x346	590
M2C34000	Fianco Lib H.1492 P.328	91
M2K00213	Mensola Sp.30 L.1350x250 C/2 Fori	117
M2K00213	Mensola Sp.30 L.1350x250 C/2 Fori	117
TOTALE		2738



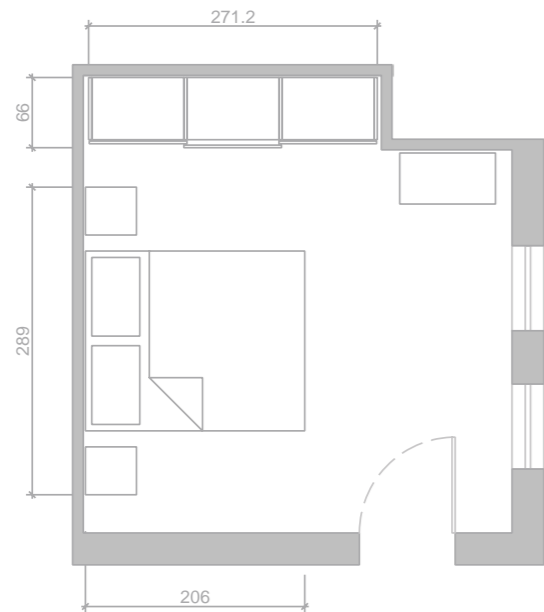
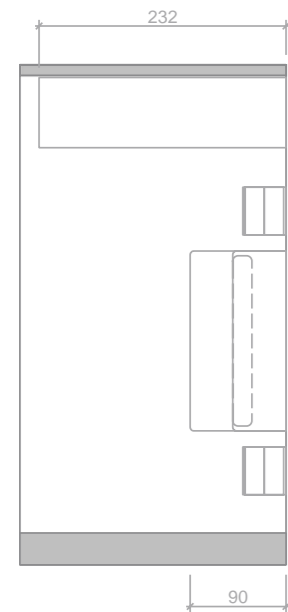
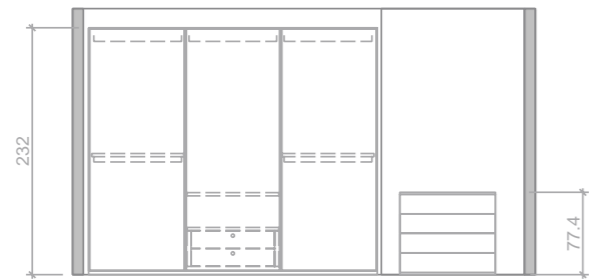
HOME 10

Code	Description	€
M2C46703	Col Lib H.2320 L.900x474	930
M2C46501	Col Lib H.2320 L.600x474	523
M2C46707	Col Lib H.2320 L.900x474	1118
M2C46000	Fianco Lib H.2320 P.456	122
M2U01054	Scrivania L.180 P.80 Met+Met	767
M2E07704	Troller L.450 H.584x474	652
TOTALE		4112

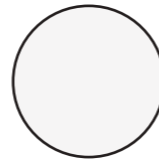


HOME 11

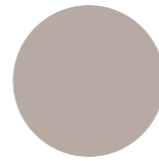
Code	Description	€
M2A16271	Arm.sco.liscia P.659 L.2712 H.2320	2685
M2E07131	Comò L.900 P.480 H.774 4c	739
M2G08950	Letto Box "Be" 1690 P.2055	564
M2E07012	Comod. L.450 P.480 H.406 2c	309
M2E07012	Comod. L.450 P.480 H.406 2c	309
M2M02086	Cassettiera Interna L.864 C/Top	343
TOTALE		4949



Bianco

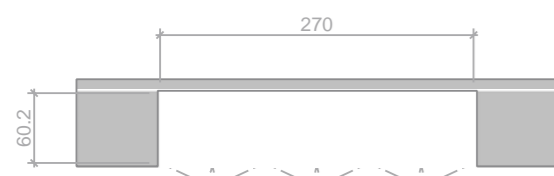
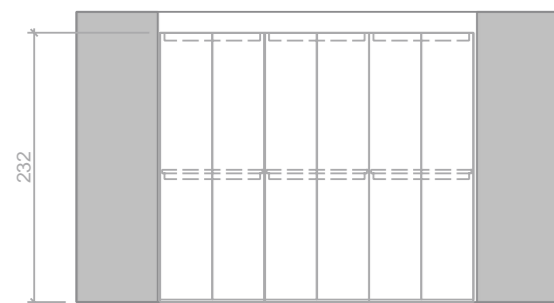


Tortora



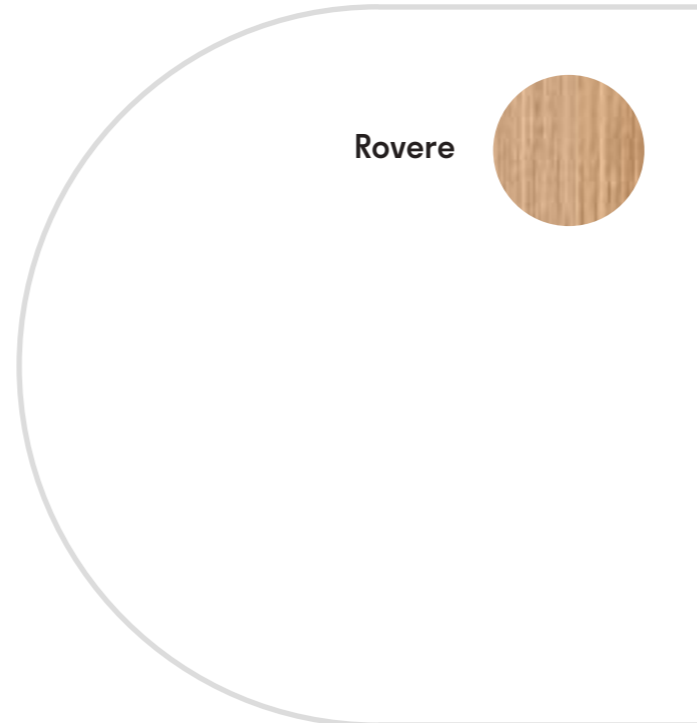
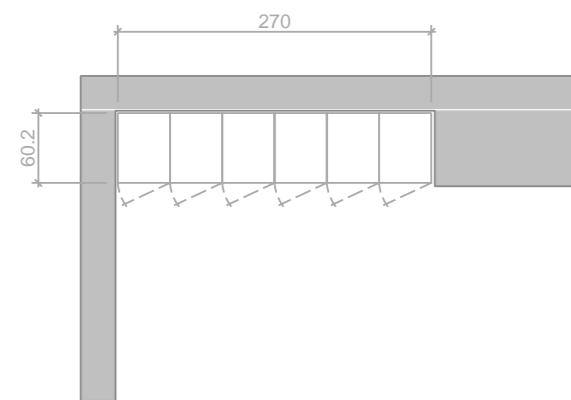
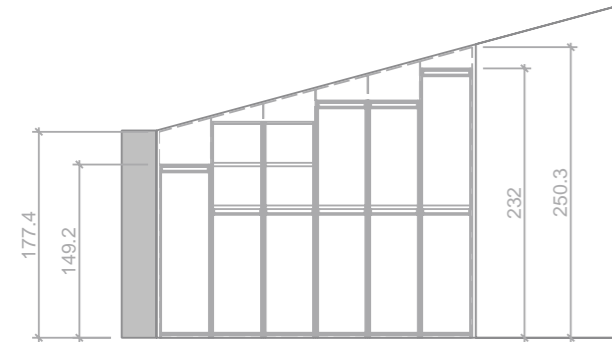
HOME 12

Code	Description	€
M2B06601	Arm.a229 L. 900 P.602 H.2320	644
M2B06601	Arm.a229 L. 900 P.602 H.2320	644
M2B06601	Arm.a229 L. 900 P.602 H.2320	644
TOTALE		1932



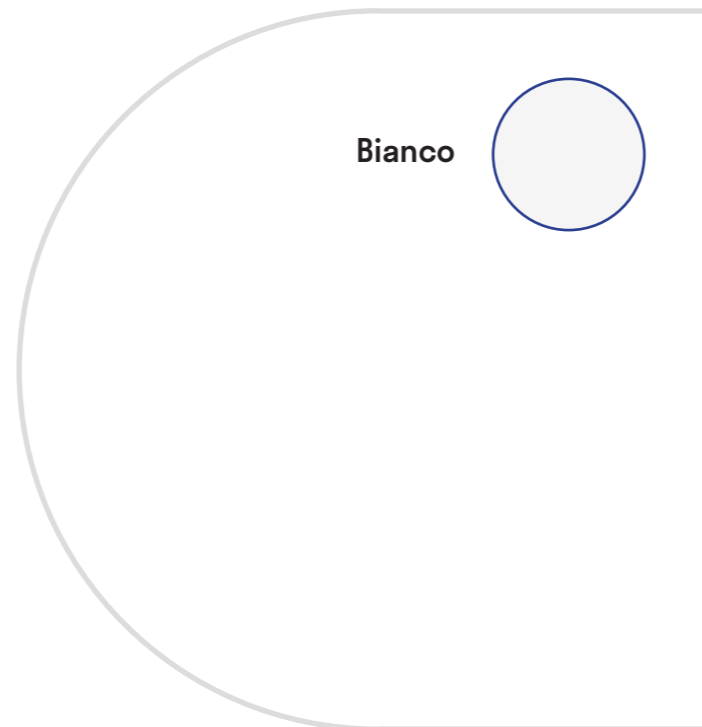
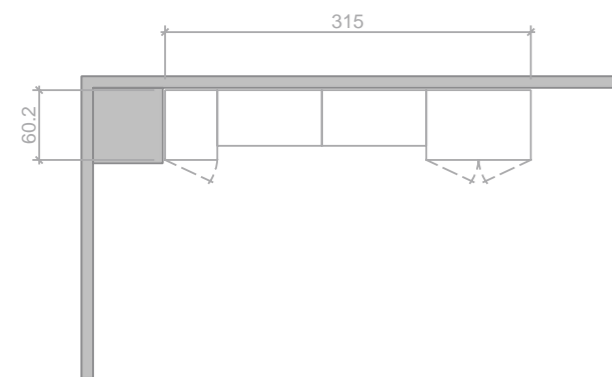
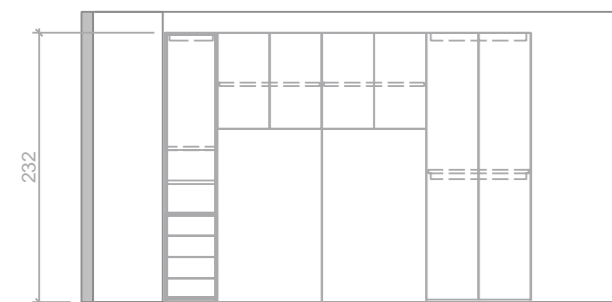
HOME 13

Code	Description	€
M2B04401	Arm.a147 L. 450 P.602 H.1492	388
M2B05401	Arm.a183 L. 450 P.602 H.1860	412
M2B05401	Arm.a183 L. 450 P.602 H.1860	402
M2B05421	Arm.a202 L. 450 P.602 H.2044	439
M2B05421	Arm.a202 L. 450 P.602 H.2044	439
M2B06401	Arm.a229 L. 450 P.602 H.2320	446
M2M02122	Ripiano Interno Armadio L.414 S.30	44
TOTALE		2660



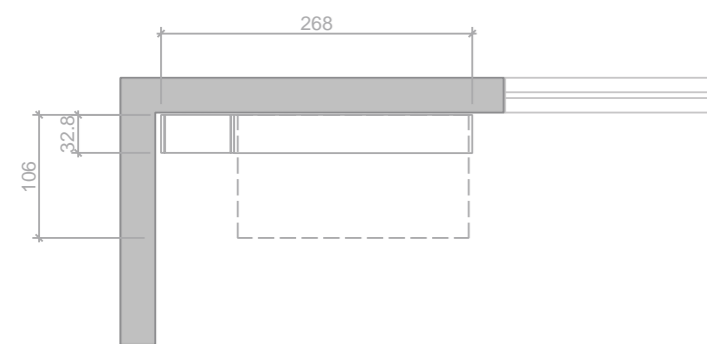
HOME 14

Code	Description	€
M2D07210	Arm.open-2 Dx L. 450 P.602 H.2412	923
M2C26123	Ponte Bibl. L1770x474 2412	1020
M2B07601	Arm.a239 L. 900 P.602 H.2412	644
TOTALE		2647

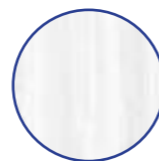


HOME 15

Code	Description	€
M2C36404	Col Lib H.2320 L.450x346	502
M2C36000	Fianco Lib H.2320 P.328	101
M2G20008	Vagone Singolo L.2050 H.1140 P.328	1695
TOTALE		2298



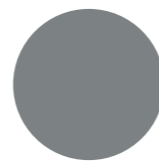
Olmo Sbiancato



Seta

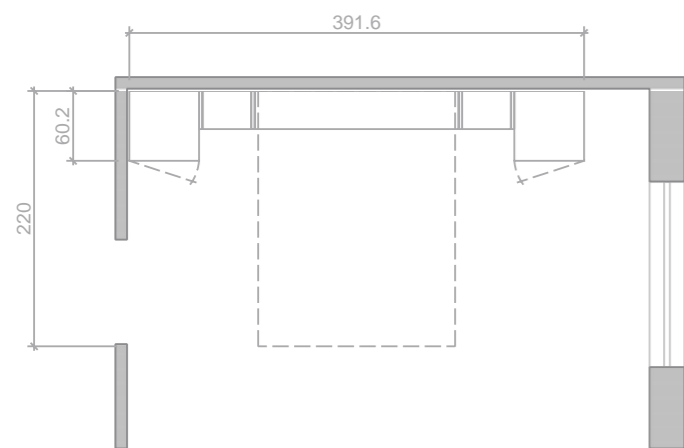
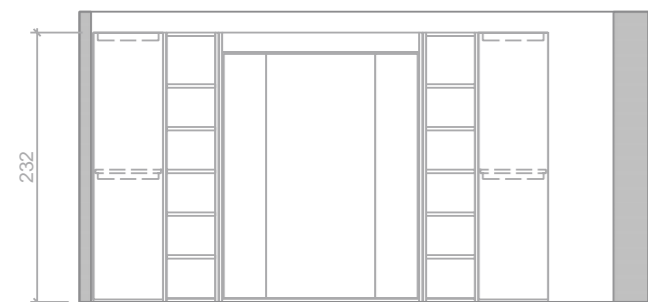


Grigio



HOME 16

Code	Description	€
M2B06501	Arm.a229 L. 600 P.602 H.2320	531
M2G20051	Arm.letto Magic L.1756 P.328 H.2320	2768
M2C36401	Col Lib H.2320 L.450x346	410
M2C36000	Fianco Lib H.2320 P.328	101
M2C36401	Col Lib H.2320 L.450x346	410
M2C36000	Fianco Lib H.2320 P.328	101
M2B06501	Arm.a229 L. 600 P.602 H.2320	531
TOTALE		4852



Rovere

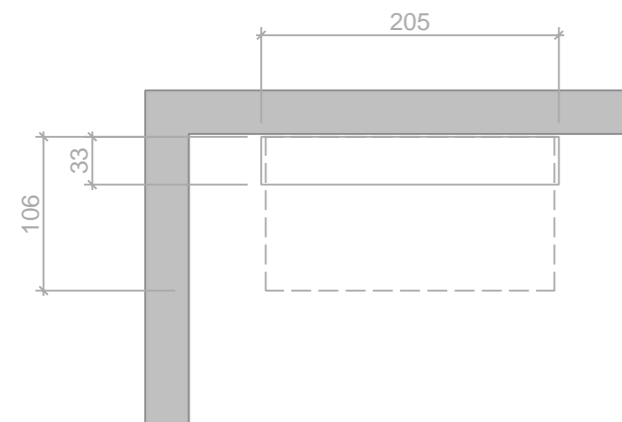
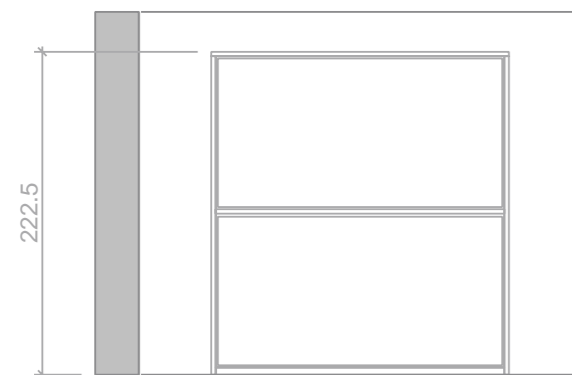


Seta



HOME 17

Code	Description	€
M2G20004	VAGONE DOPPIO L.2050 H.2225 P.328	3885
	TOTALE	3885

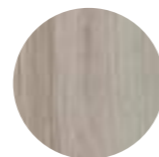


HOME 18

Code	Description	€
M2A06500	Arm.spalla L. 594 P.584 H.2320	370
M2A06600	Arm.spalla L. 894 P.584 H.2320	613
M2A06100	Arm.spalla Ang. L.1020x1050 H.2320	716
M2A06600	Arm.spalla L. 894 P.584 H.2320	613
M2A06500	Arm.spalla L. 594 P.584 H.2320	370
M2A06000	Fianco Arm. H.2320 P.584 Sp.30	149
TOTALE		2831

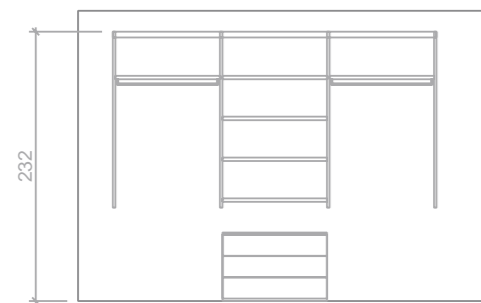


Ossidato

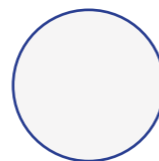


HOME 19

Code	Description	€
M2F06001	Barra Fissaggio Naked Brunito	61,16
M2F06022	Montante Naked H.1516 Brunito	110
M2F06022	Montante Naked H.1516 Brunito	110
M2F06022	Montante Naked H.1516 Brunito	110
M2F06022	Montante Naked H.1516 Brunito	110
M2E07081	Comod. L.900 P.480 H.590 3c	478
M2F06213	Ripiano Naked L.900x30x456 C/Tubo	111
M2F06213	Ripiano Naked L.900x30x456 C/Tubo	111
M2F06223	Ripiano Naked L.900x30x456	84
M2F06223	Ripiano Naked L.900x30x456	84
M2F06223	Ripiano Naked L.900x30x456	84
M2F06223	Ripiano Naked L.900x30x456	84
TOTALE		1537

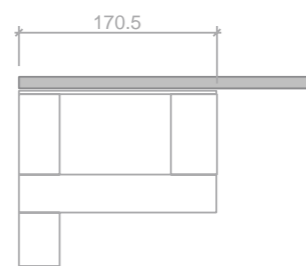
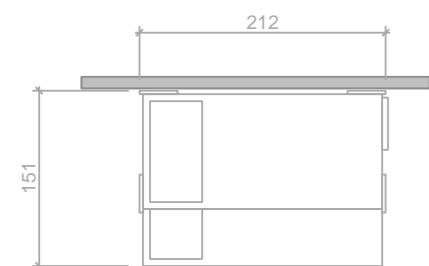
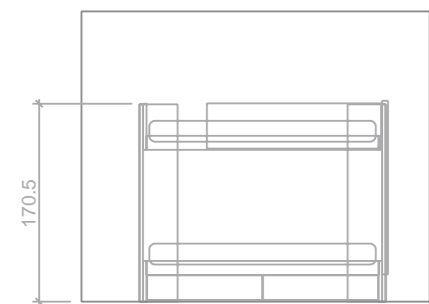


Bianco



HOME 20

Code	Description	€
M2H00667	Letto Around P1440 H.1705x2120 R Sx	1725
M2H00006	Scaletta Metallo Sosp."Bruxelles"	216
M2H00032	Protez."One" L.1500x390x30 Xlon	130
TOTALE		2071

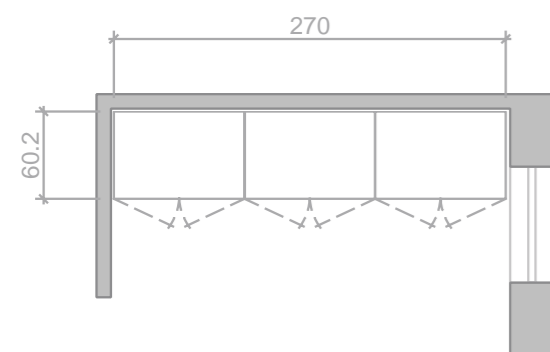
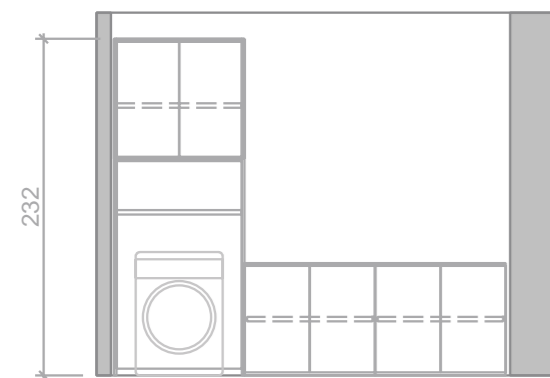


Olmo sbiancato



HOME 21

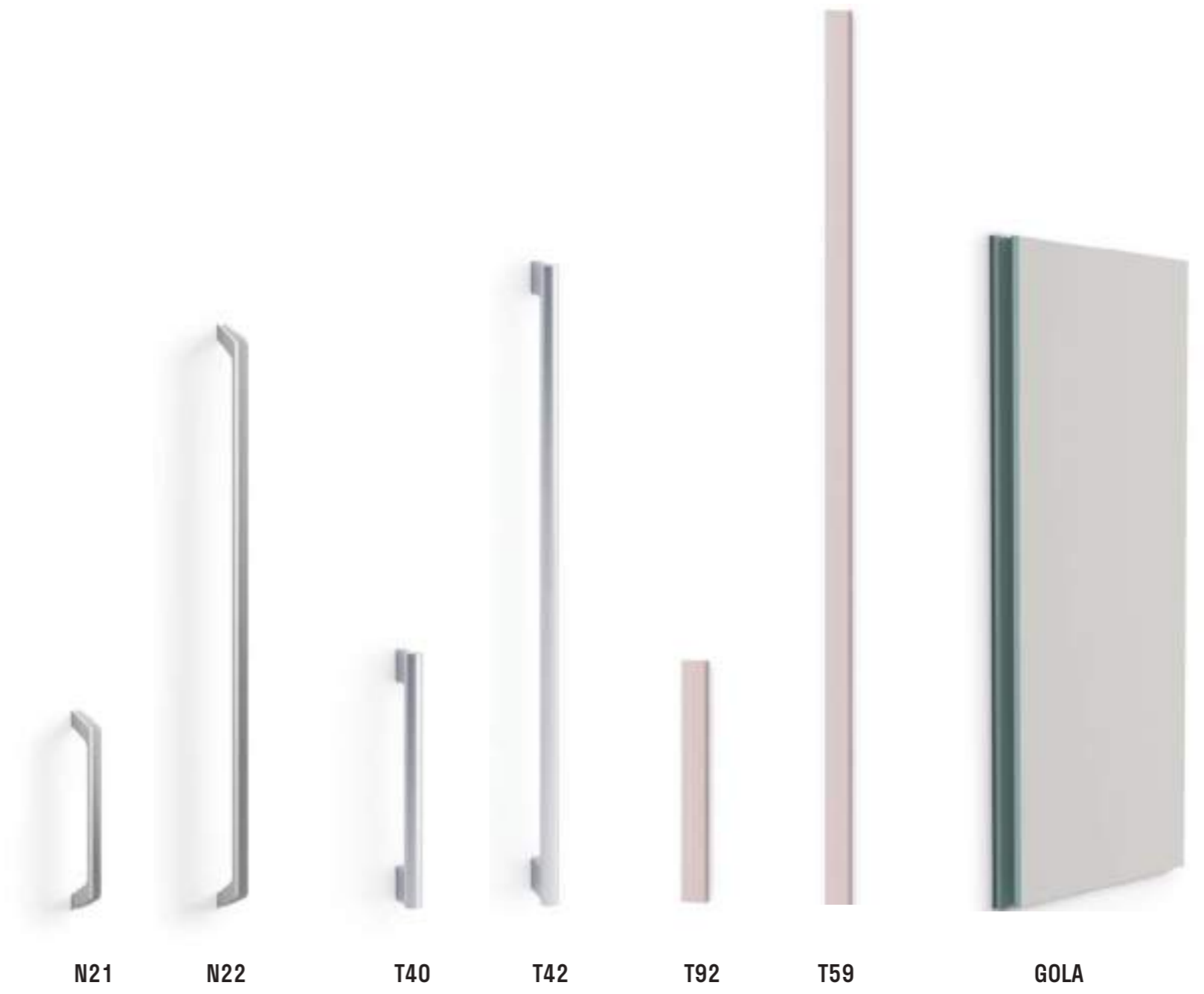
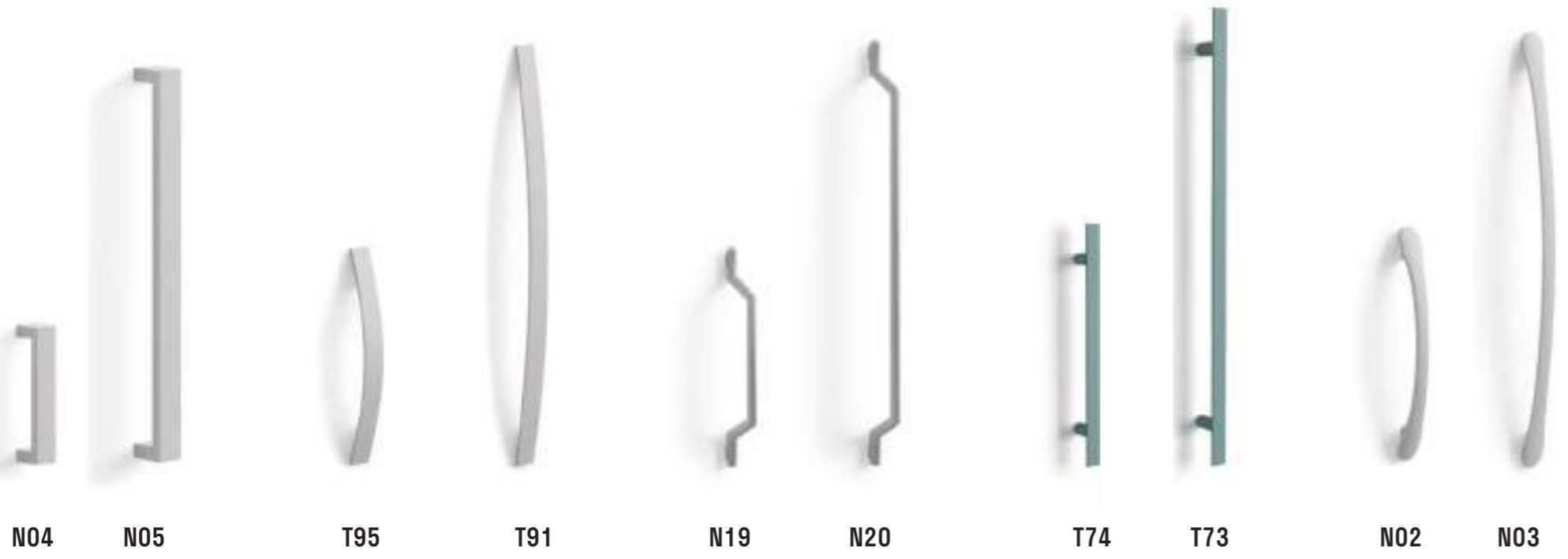
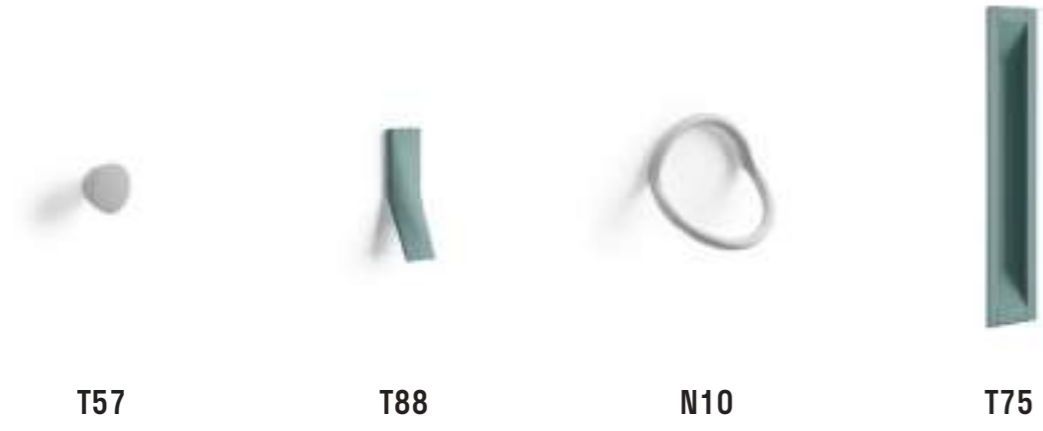
Code	Description	€
M2B06612	Arm.a229 S/Base L. 900 P.602 H.2320	646
M2E02281	Box Terra L.900 P.602 H.940 A92	435
M2E02281	Box Terra L.900 P.602 H.940 A92	435
M2E09201	Top P.608 Sp.18 M.lin.	126
TOTALE		1642



Beige

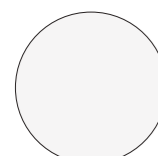


HANDLES



FINISHES

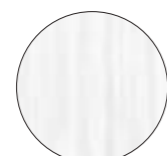
BASE MELAMINES



bianco



seta



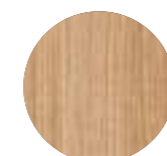
olmo sbiancato



olmo chiaro

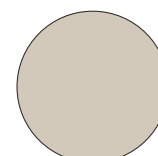


ossidato



rovere

COLOR MELAMINES



beige



tortora



platino



grigio



nuvola



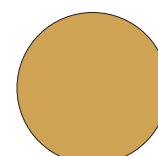
cielo



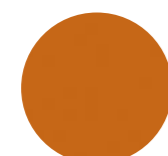
cobalto



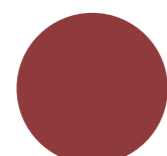
petrolio



curcuma



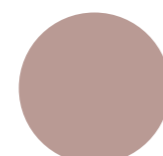
paprika



pepper



confetto



dalia



salvia

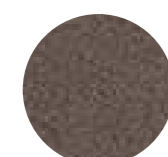


menta

DEKOR MELAMINES



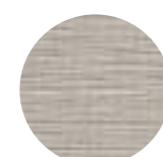
canapa



bronzo



delavè

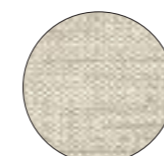


greyge

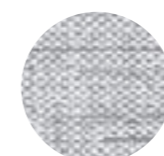
FABRICS

OREGON - A

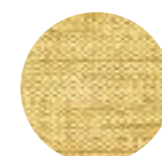
(Composition: 32% VI, 11% LI, 14% CO, 29% PC, 14% PL)



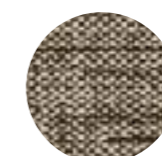
S030



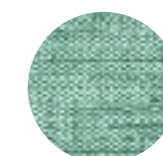
S031



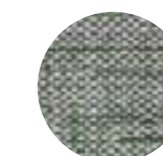
S042



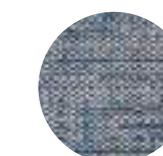
S033



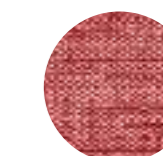
S043



S035



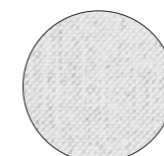
S036



S037

JAM - A

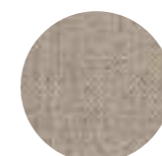
(Composition: 94% PL, 6% CO)



S150



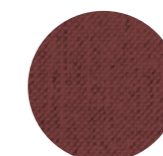
S151



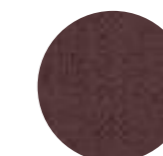
S152



S153



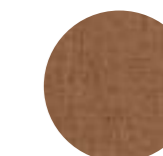
S154



S155



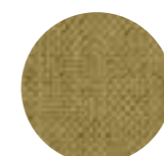
S156



S157



S158



S159



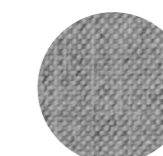
S160



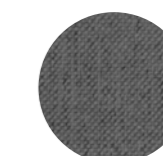
S161



S162



S163



S164

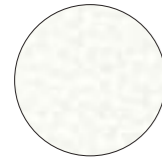


S165

FABRICS

ECO-LEATHER - B

(Composition: 25% PL-CO, 1% PU, 72% PVC)



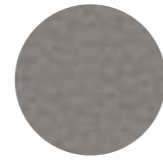
E201



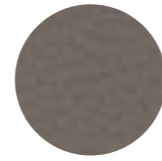
E202



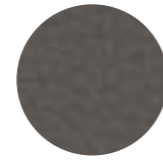
E204



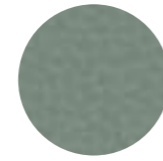
E205



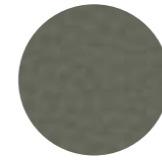
E207



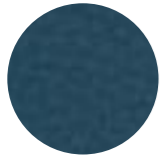
E208



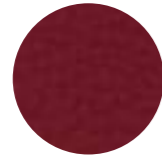
E209



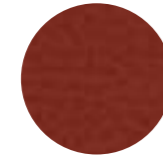
E211



E213



E215



E216



E220

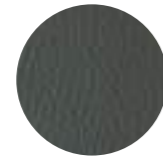
FABRIC FOR WAVE CHAIR



beige



grigio chiaro



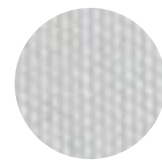
grigio scuro



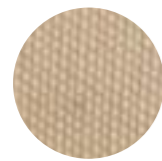
tortora

PANAMA FABRIC FOR CURTAIN

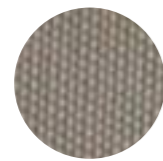
(Composition: 51% PL FR, 49% POL)



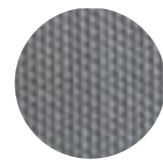
DY10



DY11



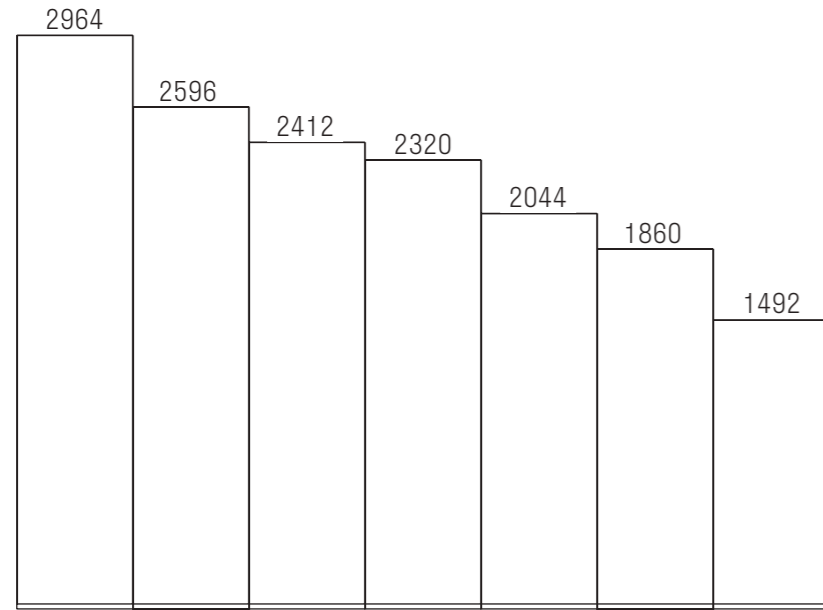
DY12



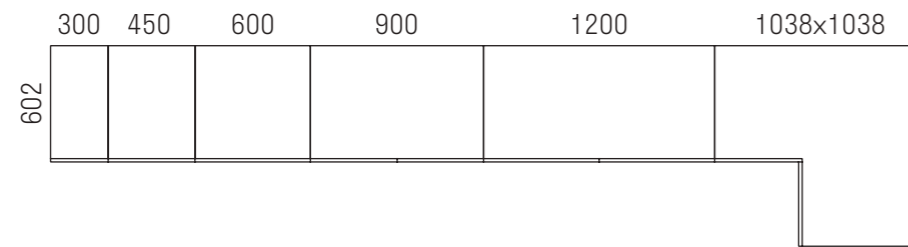
DY13

DIMENSIONS

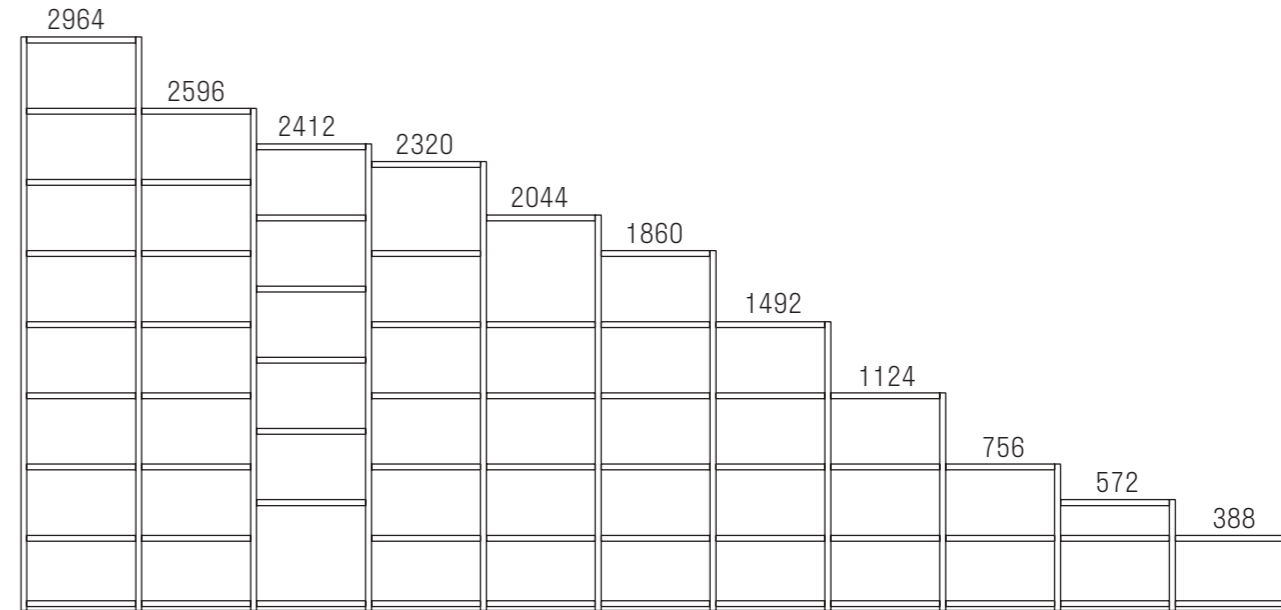
WARDROBES HEIGHTS



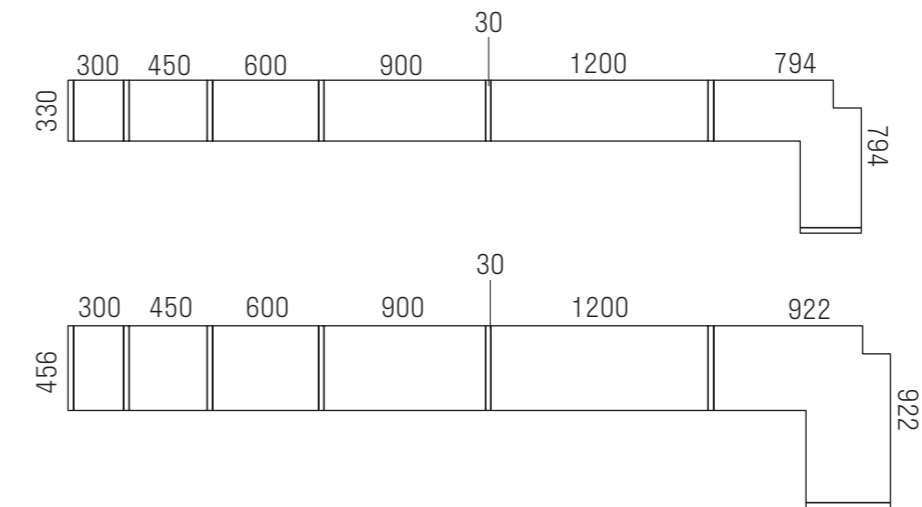
WARDROBES WIDTHS AND DEPTH



SHOULDER BOOKCASE HEIGHTS



SHOULDER BOOKCASE WIDTHS AND DEPTHS, OPENED, SINGLE-SIDED AND TWO-SIDED





HOMES

SAN MICHELE
ORME
MISTRAL
CLEVER
NARDIINTERNI

HOMES CASA SPA

Via Ettore Majorana, 186
31053 Pieve di Soligo (TV) Italy

EXPORT DEPARTMENT

ph. +39 0438 839832
fax +39 0438 839859
e-mail: export@homes.it
www.homes.it

HEADQUARTERS

Via Montello, 63/1
31053 Pieve di Soligo (TV) Italy
ph. +39 0438 909081
fax +39 0438 909089
e-mail: info@homes.it
www.homes.it

NARDIINTERNI

